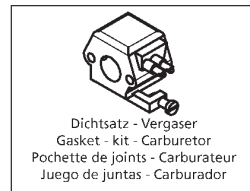
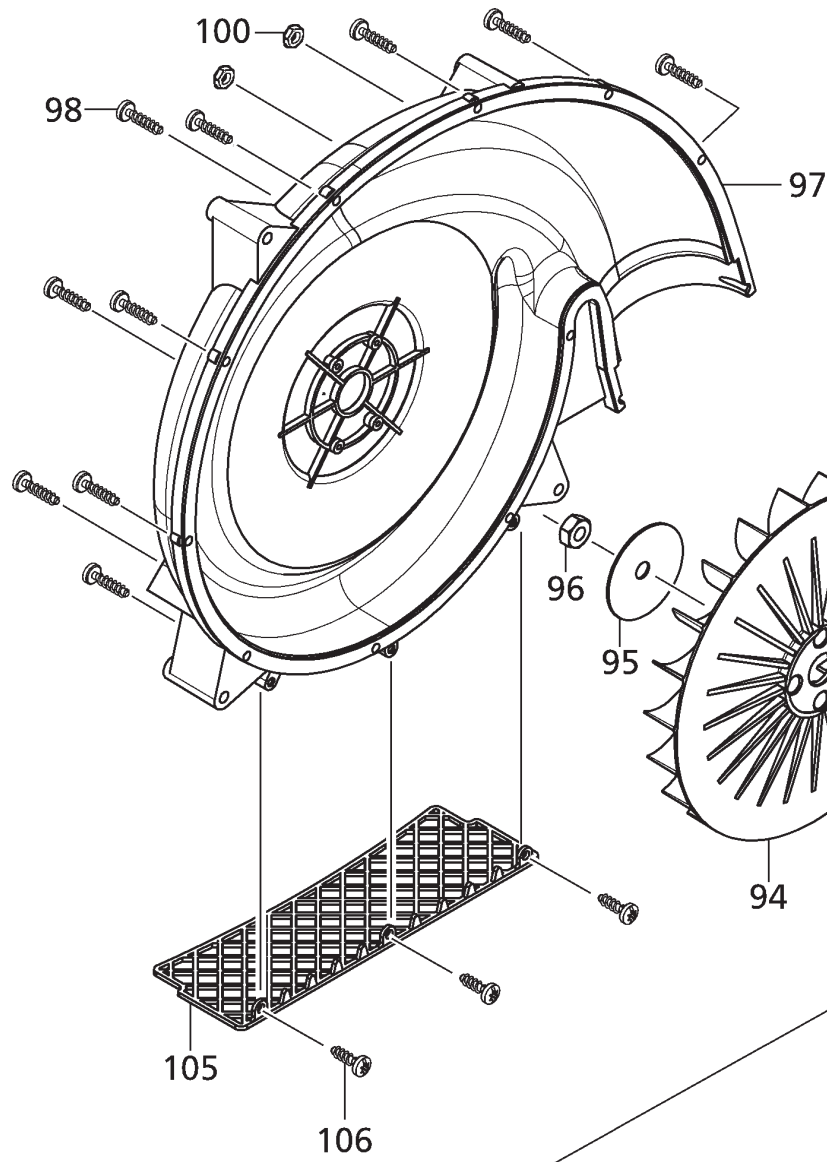


solo[®]

*Ersatzteilliste
Spare parts list
Liste de pièces de rechange
Lista de piezas de recambio*

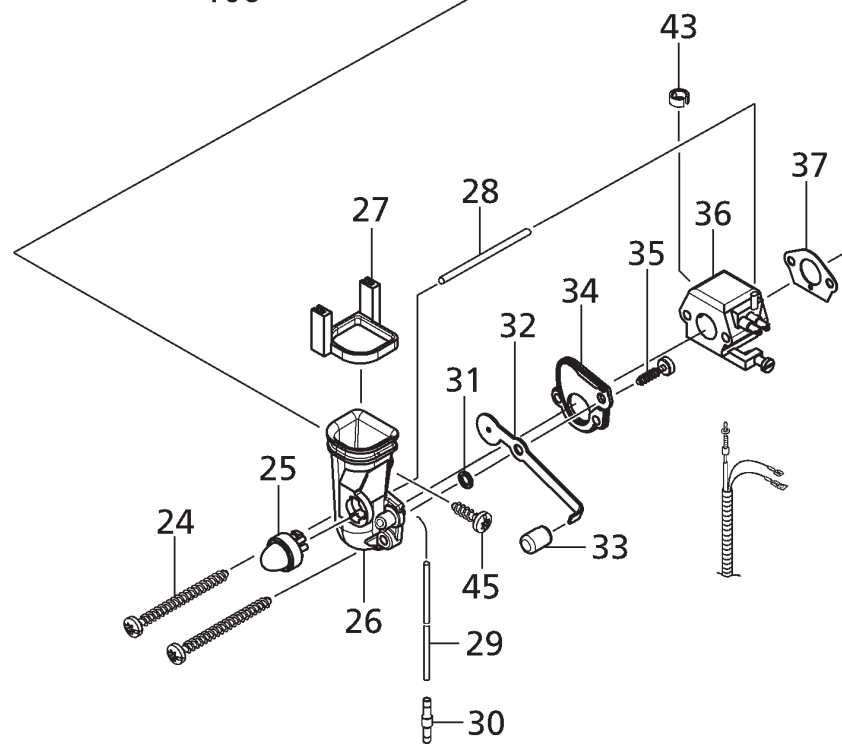
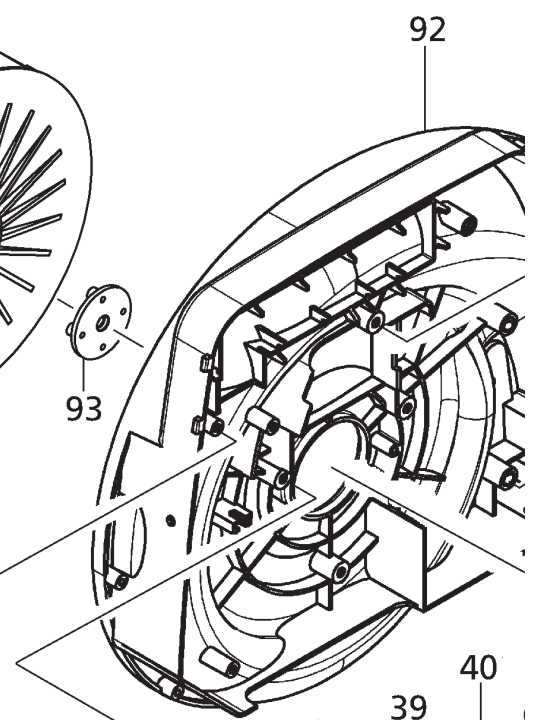
*Blasgerät
Blower Unit
Balai Souffleur
Soplador da aire*

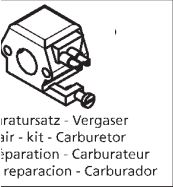
445



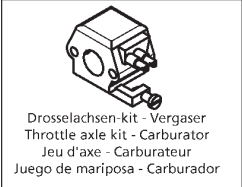
110

111

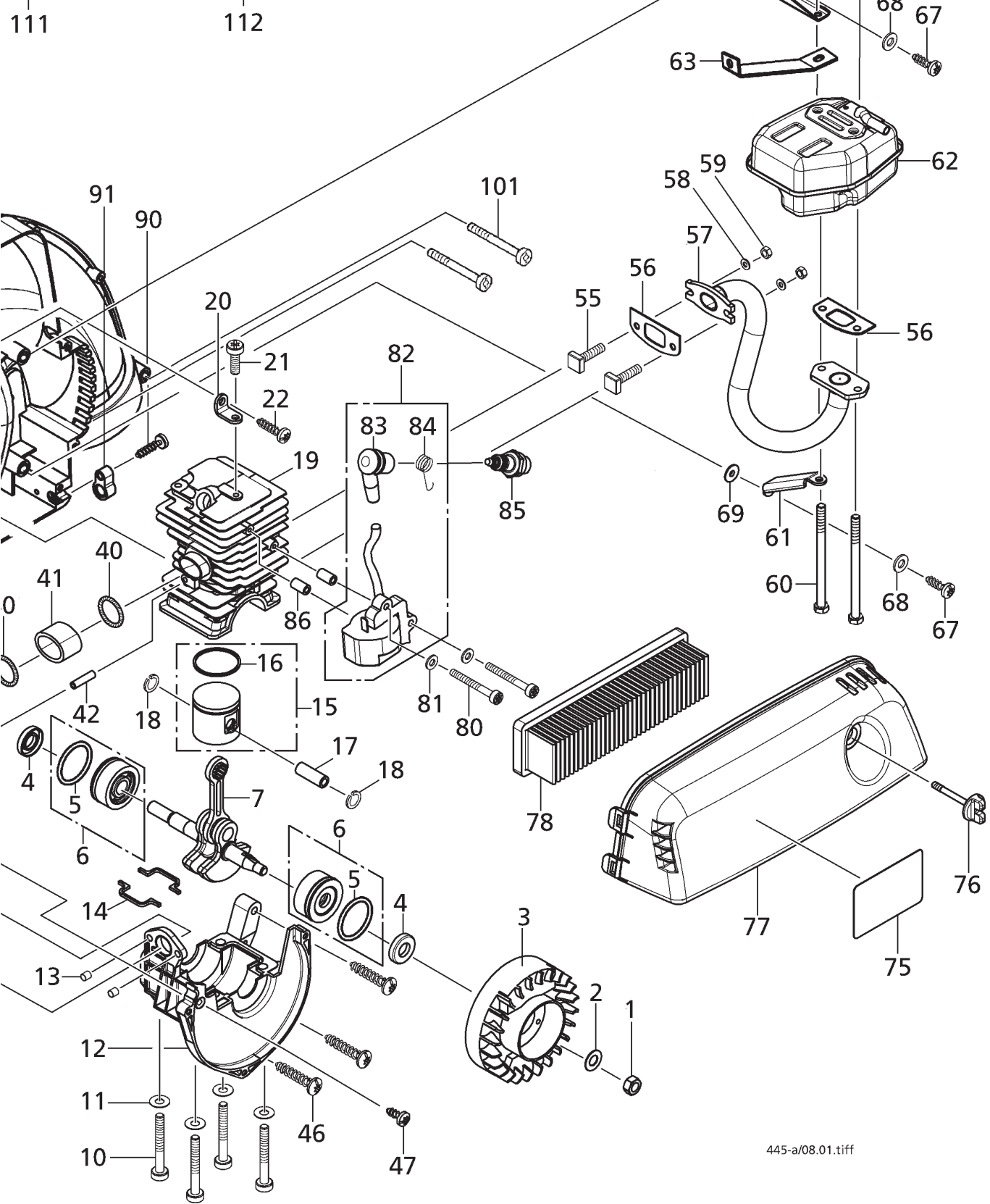




Reparaturatz - Vergaser
 Repair kit - Carburetor
 Pièces de reparation - Carburateur
 Juego de reparacion - Carburador



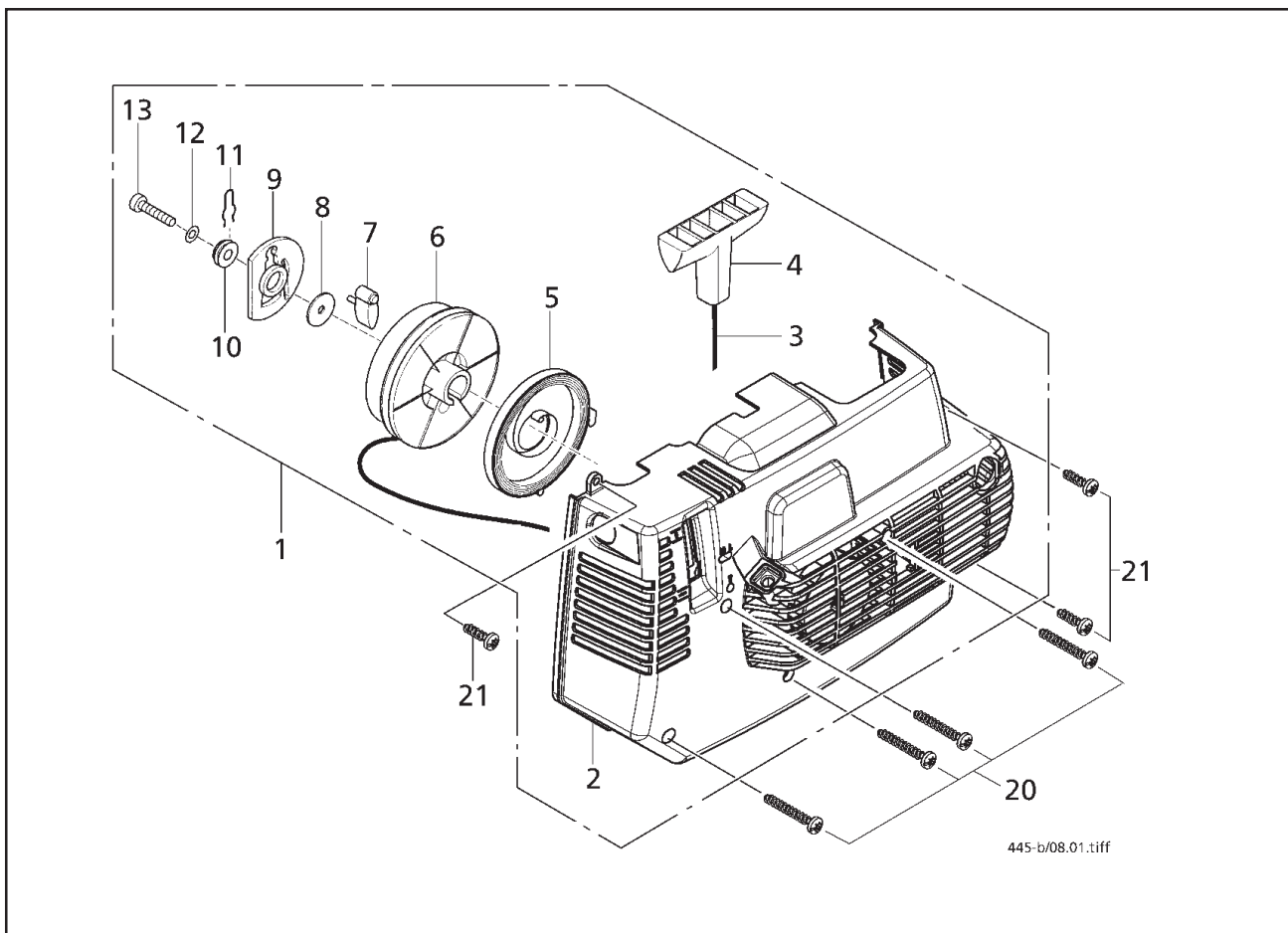
Drosselachsen-kit - Vergaser
 Throttle axle kit - Carburetor
 Jeu d'axe - Carburateur
 Juego de mariposa - Carburador



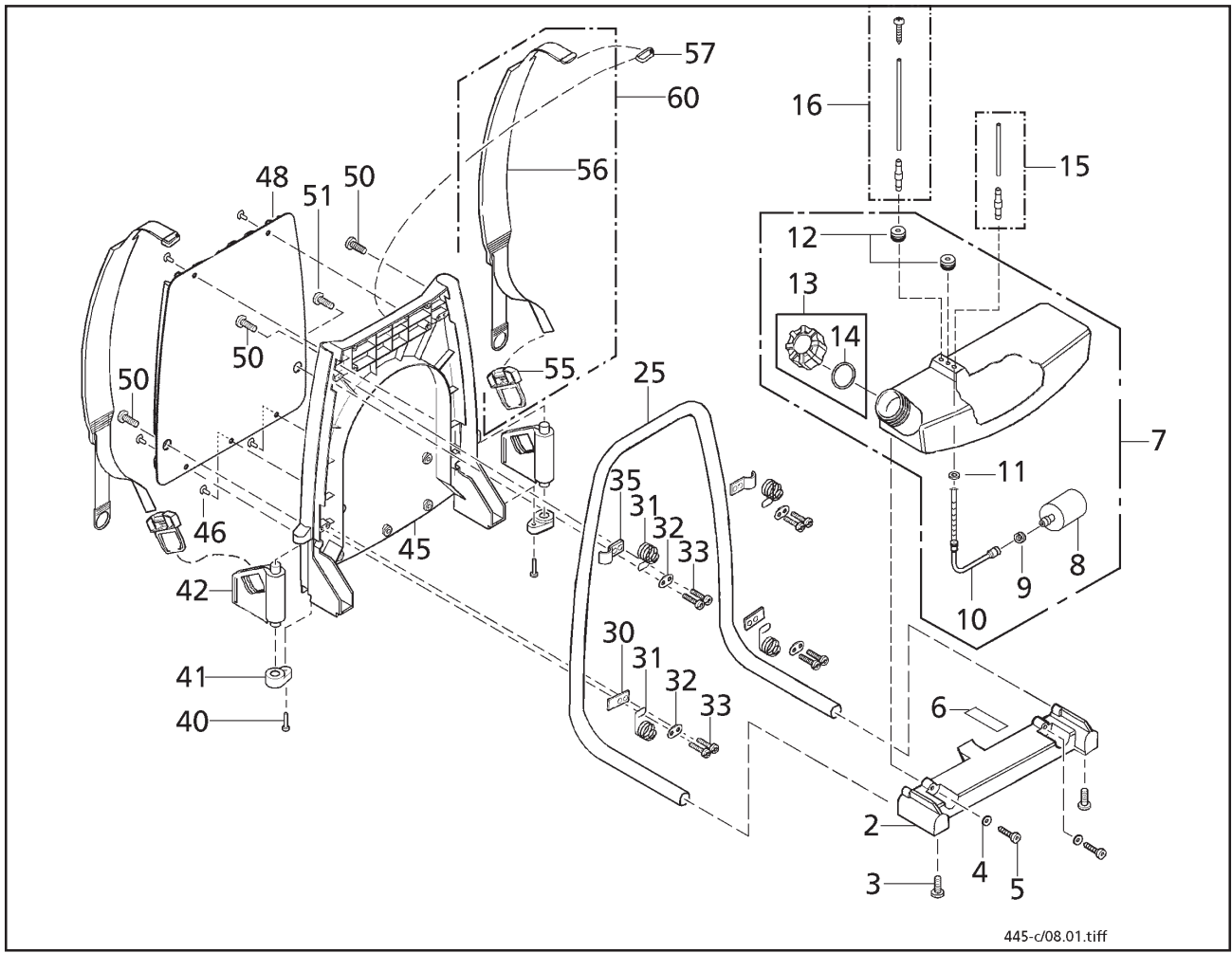
445-a/08.01.tiff

| Bild-Nr. Pos.-No. Pos.-No. Pos.-No. | Bestell-Nr. Order-No. No. de Cde. Ref.-Nr. | Modell Type Modèle Modelo | Menge Quantity Nombres Cantidad | Motor/ Gebläse | Engine/ Blower Housing | Moteur/ Carter de Turbine | Motor/ Caja del Ventilador |
|--|---|------------------------------------|--|-------------------------------|---------------------------|------------------------------|-------------------------------|
| 1 | 00 20 145 | | 1 | Skt.-Mutter M8x1 DIN 934 | nut | écrou | tuerca |
| 2 | 00 72 145 | | 1 | Scheibe 8 DIN 6796 | tension washer | rondelle de tension | arandela elastica |
| 3 | 24 00 136 | | 1 | Lüfterrad | fan wheel | turbine | turbina |
| 4 | 00 54 237 | | 2 | Wellendichtring | oil seal | joint spy | reten |
| 5 | 00 62 280 | | 2 | O-Ring 30x3 | o-ring | joint torique | anillo |
| 6 | 21 00 364 | | 2 | Lagerhülse | sleeve | douille | casquillo |
| 7 | 22 00 110 | | 1 | Kurbelwelle | crankshaft | vilebrequin | cigüeñal |
| 10 | 00 18 340 | | 4 | Zylinderschraube M5x40 | f.h. screw | vis cyl. | tornillo |
| 11 | 00 72 140 | | 4 | Scheibe 5,2x12x0,5 | spring washer | rondelle ressort | resorte |
| 12 | 21 00 445 | | 1 | Kurbelgehäuse | crankcase | carter-moteur | carter cigüeñal |
| 13 | 20 31 144 | | 2 | Hülse | sleeve | douille | casquillo |
| 14 | 20 63 370 | | 2 | Dichtungsteil | sealing | joint | junta |
| 15 | 22 00 897 | | 1 | Kolben Ø 38,00 mm | piston | piston | piston |
| 16 | 20 48 386 | | 1 | Kolbenring 38x1,5 | piston ring | segment | anillo de piston |
| 17 | 20 31 249 25 | | 1 | Kolbenbolzen 10/6x28 | piston pin | axe de piston | bulon de piston |
| 18 | 00 55 267 | | 2 | Sicherungsring | piston pin circlip | arrêt d'axe piston | anillo de seguridad |
| 19 | 20 11 821 | | 1 | Zylinder Ø 38,00 mm | cylinder | cylindre | cilindro |
| 20 | 20 43 120 | | 1 | Befestigungswinkel, Zyl. | fixing angle | fixation | soporte |
| 21 | 00 18 336 | | 1 | Zylinderschraube 5x16 | screw | vis | tornillo |
| 22 | 00 18 370 | | 1 | Linsenschraube 6x20 | screw | vis | tornillo |
| 24 | 00 18 382 | | 2 | Linsenschraube 5x55 | screw | vis | tornillo |
| 25 | 27 00 322 | | 1 | Primer-Pumpe | primer | primer | cabador |
| 26 | 40 73 110 | | 1 | Saugrohr | suction tube | tuyau d'aspiration | tubo de aspiración |
| 27 | 40 61 131 | | 1 | Dichtung für Saugrohr | sealing | joint | junta |
| 28 | 00 64 407 | | 80mm | Schlauch 2x1,5 | fuel hose | durite | tubo |
| 29 | 00 64 300 | | 270mm | Schlauch 3x1,5 Benzinrücklauf | hose | durite | tubo |
| 30 | 00 66 452 | | 1 | Stutzen | socket | manchon | munon |
| 31 | 00 61 360 | | 1 | Reibscheibe | washer | rondelle | arandela |
| 32 | 40 43 103 | | 1 | Chokeklappe | choke flap | étrangleur | valvula |
| 33 | 20 74 966 | | 1 | Chokeknopf | knob | bouton | boton |
| 34 | 40 73 112 | | 1 | Saugrohrdeckel | tube cover | couvercle | tapa |
| 35 | 00 18 355 | | 1 | Linsenschraube 4x16 | screw | vis | tornillo |
| 36 | 23 00 819 | | 1 | Vergaser BING 47B | carburetor | carburateur | carburador |
| 37 | 20 61 520 | | 1 | Vergaserdichtung | carburetor gasket | joint de carburateur | junta carburador |
| 38 | 20 61 519 | | 1 | Vergaserstutzendichtung | manifold gasket | joint de bride | junta brida |
| 39 | 23 00 821 | | 1 | Vergaserstutzen mit Kugel | manifold | bride de carburateur | brida carburador |
| 40 | 00 71 153 | | 2 | Ringfeder | spring | ressort bague | resorte |
| 41 | 60 63 322 | | 1 | Verbindungsschlauch | hose connection | tuyau raccord | tubo |
| 42 | 00 64 319 | | 20mm | Schlauch 5x1,5 20mm | hose | tuyau | tubo |
| 43 | 20 74 905 | | 1 | Haltering | retaining ring | bague de support | anillo soporte |
| 45 | 00 18 274 | | 1 | Linsenschraube 5x16 | screw | vis | tornillo |
| 46 | 00 18 377 | | 3 | Linsenschraube 6x30 | screw | vis | tornillo |
| 47 | 00 18 361 | | 1 | Linsenschraube 5x12 | screw | vis | tornillo |
| 48 | 00 18 274 | | 1 | Linsenschraube 5x16 | screw | vis | tornillo |
| 50 | 20 73 519 | | 1 | Luftführung | air guide | guide d'air | guia aire |
| 55 | 00 18 386 | | 2 | Vierkantschraube M5x20 | filter screw | vis pour filtre | tornillo |
| 56 | 20 61 513 | | 2 | Auspuffdichtung | exhaust gasket | joint échappement | junta de escape |
| 57 | 20 00 108 | | 1 | Krümmen | elbow | coude | codo |
| 58 | 00 72 144 | | 2 | Sicherungsscheibe 5 DIN 6796A | tension washer | rondelle de tension | arandela elastica |
| 59 | 00 28 137 | | 2 | Sechskantmutter M5 DIN 980 | hex. nut | écrou hex. | tuerca |
| 60 | 00 12 309 | | 2 | Sechskantschraube M5x75 | hex. screw | vis hex. | tornillo |
| 61 | 20 43 114 | | 1 | Befestigungswinkel unten | fixing angle | fixation | soporte |
| 62 | 25 00107 | | 1 | Auspuff vollst. | exhaust compl. | échappement compl. | escape compl. |
| 63 | 20 43 122 | | 1 | Auspuffhalter | exhaust support | support échappement | soporte de escape |
| 64 | 20 43 113 | | 1 | Befestigungswinkel oben | fixing angle | fixation | soporte |
| 65 | 00 72 144 | | 2 | Sicherungsscheibe 5 DIN 6796A | tension washer | rondelle tension | arandela elastica |
| 66 | 00 28 137 | | 2 | Sechskantmutter M5 DIN 980 | hex. nut | écrou hex. | tuerca |
| 67 | 00 18 274 | | 2 | Linsenschraube 5x16 | screw | vis | tornillo |
| 68 | 00 72 144 | | 2 | Sich.scheibe 5 DIN 6796 A | tension washer | rondelle de tension | arandela elastica |
| 69 | 20 74 562 | | 2 | Isolierelement | insulator | élément d'isolation | elemento aislador |
| 75 | 00 69 447 | | 1 | SKS "SOLO 445" | decal | autocollant | adhesivo |
| 76 | 68 00 349 | | 1 | Filterschraube M5x40 | screw | vis | tornillo |
| 77 | 40 73 105 | | 1 | Filterhaube | filter cover | couvercle filter | tapa filtro |
| 78 | 20 48 282 | | 1 | Luftfilter | air filter | filtre à air | filtro |
| 80 | 00 18 394 | | 2 | Zylinderschraube M 4x35 | f.h. screw | vis t.c. | tornillo |
| 81 | 00 72 148 | | 2 | Sicherungsscheibe 4 DIN 6796A | washer | rondelle | disco de tension |
| 82 | 23 00 725 | | 1 | Zündmodul Phelon, kompl. | ignition coil compl. | bobine d'allumage compl. | bobina compl. |
| 83 | 00 84 600 | | 1 | Kerzenstecker | spark plug cap | capuchon de bougie | terminal de bujia |
| 84 | 00 73 385 | | 1 | Kontaktfeder | contact spring | ressort de contact | resorte de contacto |
| 85 | 23 00 730 | | 1 | Zündkerze | spark plug | bougie | bujia |
| 86 | 40 31 131 | | 2 | Distanzhülse | distance sleeve | douille | vaina |
| 90 | 00 18 363 | | 1 | Linsenschraube 5x20 | screw | vis | tornillo |
| 91 | 20 74 895 | | 1 | Klemme | clamp | collier | terminal |
| 92 | 40 73 118 | | 1 | Gebläsegehäuse 1 | blower housing | carter de turbine | carter turbina |

| Bild-Nr. Pos.-No. Pos.-No. Pos.-No. | Bestell-Nr. Order-No. No. de Cde. Ref.-Nr. | Modell Type Modèle Modelo | Menge Quantity Nombres Cantidad | Motor/ Gebläse | Engine/ Blower Housing | Moteur/ Carter de Turbine | Motor/ Caja del Ventilador |
|--|---|------------------------------------|--|-------------------------------|------------------------------|--------------------------------|--------------------------------|
| 93 | 40 16 320 | | 1 | Nabe | hub | moyeu | cubo |
| 94 | 40 73 114 | | 1 | Gebläserad | fan wheel | turbine | turbina |
| 95 | 00 73 121 | | 1 | Spannscheibe | tension washer | rondelle de tension | disco |
| 96 | 00 20 104 | | 1 | Sechskantmutter M10x1 DIN 934 | hex. nut | écrou | tuerca hexagonal |
| 97 | 40 73 119 | | 1 | Gebläsegehäuse 2 | blower housing 2 | carter de turbine 2 | carter turbina 2 |
| 98 | 00 18 363 | | 10 | Linsenschraube 5x20 | screw | vis | tornillo |
| 100 | 00 28 137 | | 2 | Sechskantmutter M5 DIN 980 | hex. nut | écrou hex. | tuerca |
| 101 | 00 18 342 | | 2 | Zylinderschraube M5x60 | f.h. screw | vis cyl. | tornillo |
| 105 | 40 73 152 | | 1 | Schutzgitter | protection screen | grille | rejilla |
| 106 | 00 18 361 | | 3 | Linsenschraube 5x12 | screw | vis | tornillo |
| 110 | 05 10 992 | | 1 | Dichtsatz-Vergaser | gasket-kit-carburetor | pochette de joints-carbureteur | juego de juntas-carburador |
| 111 | 05 10 993 | | 1 | Reparatursatz-Vergaser | repair-kit-carburetor | kit de réparation-carbureteur | juego de reparacion-carburador |
| 112 | 05 10 994 | | 1 | Drosselachsen-Kit-Vergaser | throttle axle kit-carburetor | jeu d'axe-carbureteur | juego de mariposa-carburador |

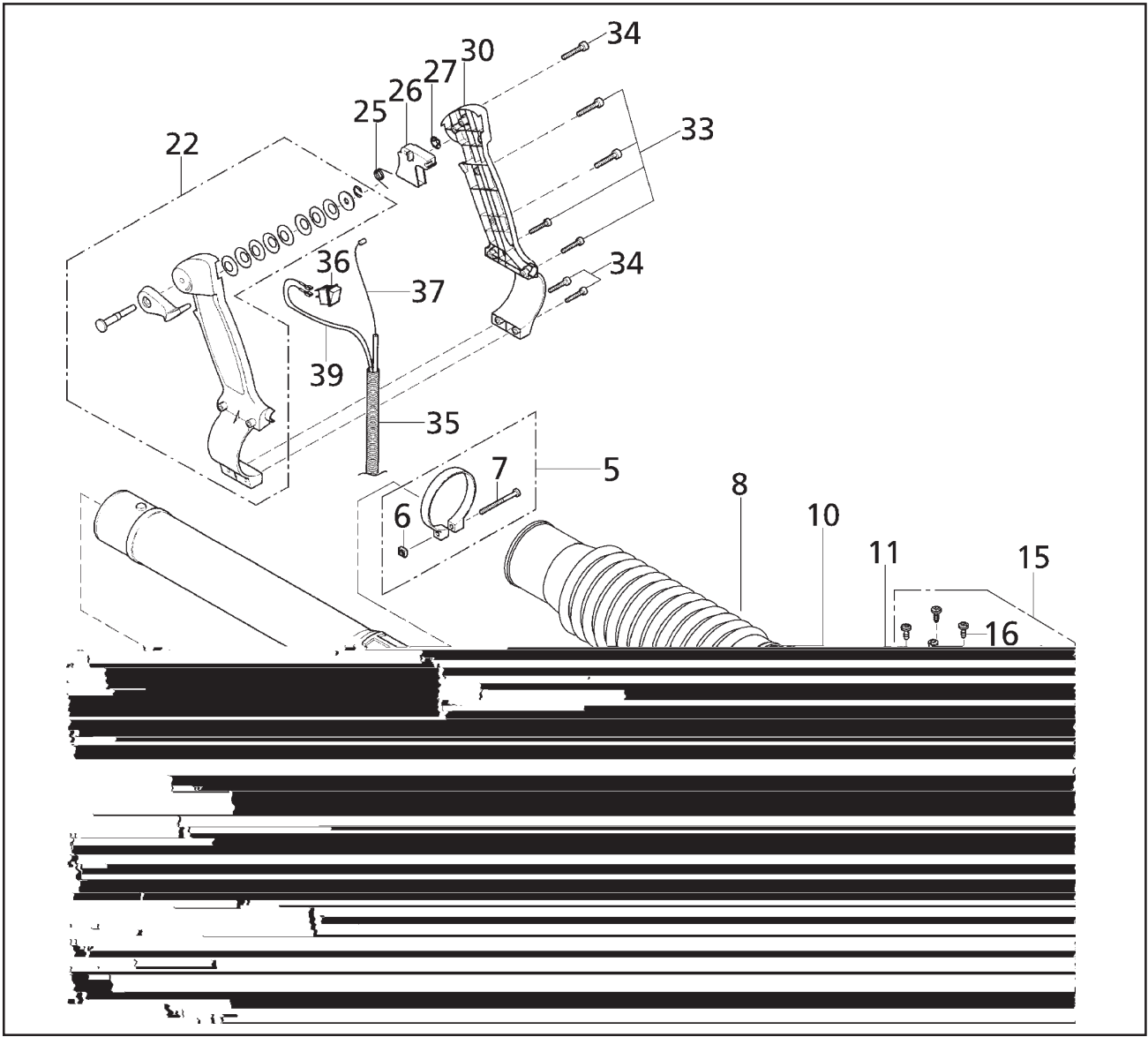


| Bild-Nr. Pos.-No. Pos.-No. | Bestell-Nr. Order-No. No. de Cde. Ref.-Nr. | Modell Type Modèle Modelo | Menge Quantity Nombres Cantidad | Starter | Starter | Lanceur | Arranque |
|----------------------------------|---|------------------------------------|--|-------------------------|-----------------|---------------------|---------------------|
| 1 | 26 00 300 | | 1 | Starter, kompl. | starter, compl. | lanceur, compl. | arranque, compl. |
| 2 | 21 00 894 | | 1 | Startergehäuse | starter housing | carter de lanceur | carter de arranque |
| 3 | 00 63 195 25 | | 1 | Starterseil 3x1050 | starter rope | corde de lanceur | cuerda de arranque |
| 4 | 20 74 570 | | 1 | Startergriff | starter grip | poignée lanceur | empunadura arranque |
| 5 | 26 00 284 | | 1 | Federkassette | spring cassette | cassette de ressort | caja de resorte |
| 6 | 20 74 915 | | 1 | Seilrolle | rope pulley | poulie de lanceur | roldana |
| 7 | 20 74 343 | | 1 | Starterklinke | starter pawl | cliquet de lanceur | trinquete |
| 8 | 00 31 611 | | 1 | Scheibe 4,3x16x1 | washer | rondelle | arandela |
| 9 | 20 74 977 | | 1 | Kulisse, rot | template, red | coulisse, rouge | colisa, rojo |
| 10 | 20 31 965 | | 1 | Distanzstück 4,3x12,5x5 | spacer | butée d'espacement | espaciador |
| 11 | 00 73 365 | | 1 | Federstecker 1,4 | pin | goupille beta | clavija |
| 12 | 00 34 152 | | 1 | Sicherungsscheibe 4S | circlip | rondelle | arandela |
| 13 | 00 18 384 | | 1 | Zylinderschraube 4x16 | screw | vis | tornillo |
| 20 | 00 18 276 | | 4 | Linsenschraube 5x35 | screw | vis | tornillo |
| 21 | 00 18 363 | | 3 | Linsenschraube 5x20 | screw | vis | tornillo |



445-c/08.01.tiff

| Bild-Nr. Pos.-No. Pos.-No. Pos.-No. | Bestell-Nr. Order-No. No. de Cde. Ref.-Nr. | Modell Type Modele Modelo | Menge Quantity Nombres Cantidad | Tragegestell | Frame | Châssis | Bastidor |
|--|---|------------------------------------|--|---------------------------|--------------------------|---------------------------|-----------------------------|
| 2 | 40 73 682 | | 1 | Bodenplatte | bottom plate | plaque basse | chapa |
| 3 | 00 18 274 | | 2 | Linsenschraube 5x16 | screw | vis | tornillo |
| 4 | 00 30 102 | | 2 | Scheibe 5,3 DIN 9021 A | washer | rondelle | arandela |
| 5 | 00 18 275 | | 2 | Linsenschraube 5x30 | screw | vis | tornillo |
| 6 | 00 61 361 | | 1 | Filz | felt | feutre | fieltro |
| 7 | 27 00 333 | | 1 | Benzintank, enth.: (| fuel tank | bouchon d'essence | deposito gasolina |
| 8 | 27 00 416 | | 1 | Filter - Benzinsucher | fuel pick-up | filtre, crepine essence | filtro gasolina |
| 9 | 00 73 352 | | 1 | Schlauchöse | grommet | collier | ojete |
| 10 | 60 63 328 | | 1 | Kraftstoffschlauch | fuel hose | tuyau d'essence | tubo de gasolina |
| 11 | 00 73 351 | | 1 | Schlauchöse | grommet | collier | manguito de cable |
| 12 | 80 63 247 | | 2 | Tülle | socket | douille | embocadura |
| 13 | 27 00 395 | | 1 | Tankverschluss, kompl. | tank cap, compl. | bouchon réservoir,compl. | cierra de deposito, compl. |
| 14 | 00 61 280 | | 1 | Deckeldichtung 35x45,3x2) | lid gasket) | joint de couvercle) | junta) |
| 15 | 27 00 312 | | 1 | Schlauch + Stutzen | hose and socket | tuyau + raccord de durite | tubo y munon |
| 16 | 27 00 421 | | 1 | Entlüftungsschlauch | ventilation hose | tuyau ventilation | tubo ventilación |
| 25 | 40 35 904 | | 1 | Rohrbügel 22x1,5 | handle loop | arceau | tubo portante |
| 30 | 40 42 577 | | 2 | Spannplatte | tension plate | plaque de tension | placa de tension |
| 31 | 00 73 396 | | 4 | Dämpfungsfeder 3x19x26 | av spring | ressort amortisseur | resorte de antivibración |
| 32 | 60 43 107 | | 4 | Flanschblech | flange plate | tôle flange | chapa |
| 33 | 00 18 363 | | 8 | Linsenschraube 5x20 | screw | vis | tornillo |
| 35 | 40 46 100 | | 2 | Spannbügel | tension bracket | étrier de tension | arco de tension |
| 40 | 00 18 363 | | 2 | Linsenschraube 5x20 | screw | vis | tornillo |
| 41 | 40 74 126 | | 2 | Kappe | cap | capuchon | caperuza |
| 42 | 40 74 275 | | 2 | Gurtbefestigung | strap holder | porte-bretelle | sopORTE de cinturón |
| 45 | 40 73 680 | | 1 | Rückenplatte | back plate | plaque dorsale | placa de espalda |
| 46 | 00 44 144 | | 5 | Steckniet 5,7x18 | cushion rivet | rivet | remanche |
| 48 | 00 98 101 | | 1 | Rückenkissen | back cushion | coussin dorsale | almohadilla |
| 50 | 00 18 370 | | 3 | Linsenschraube 6x20 | screw | vis | tornillo |
| 51 | 00 18 369 | | 1 | Linsenschraube 6x16 | screw | vis | tornillo |
| 60 | 43 00 332 | | 2 | Tragegurt, enth.: (| shoulder strap, incl.: (| bretelle, incl.: (| cinturón portador, incl.: (|
| (55) | 40 74 921 25 | | 2 | Gurtschließe | strap clamp | fermeture bretelle | cierra de cinturón |
| (56) | 43 00 335 25 | | 2 | Tragegurt) | shoulder strap) | bretelle) | cinturón portador) |
| 57 | 40 74 412 | | 2 | Gurthalter, schwarz | strap holder, black | porte-bretelle | hebillas |



| Bild-Nr. Pos.-No. Pos.-No. | Bestell-Nr. Order-No. No. de Cde. Ref.-Nr. | Modell Type Modèle Modelo | Menge Quantity Nombres Cantidad | Blasrohr | Air tube | Tube de soufflerie | Tube soplador |
|----------------------------------|---|------------------------------------|--|------------------------------|------------------------|-------------------------------|----------------------|
| 1 | 40 71 289 | | 1 | Krümmmer 64x336 | elbow | coude | codo |
| 2 | 40 71 288 | | 1 | Blasrohr 61/64x425 | tube | tube | tubo |
| 4 | 44 00 248 | | 1 | Blasrohr 62,5/68,5x430 | tube | tube | tubo |
| 5 | 00 66 399 | | 1 | Schelle 68x10, kompl. | clamp, compl. | collier, compl. | abrazadera, compl. |
| 6 | 00 21 257 | | 1 | Vierkantmutter M5 | square nut | écrou | tuerca |
| 7 | 00 11 274 | | 1 | Zylinderschraube M5x50 | f.h.screw | vis t.c. | tornillo |
| 8 | 40 71 148 | | 1 | Faltenschlauch 92D | pleated hose | tuyau pliable | tubo plegable |
| 10 | 00 66 130 | | 1 | Klemmschelle 83 | clamp | collier | abrazadera |
| 11 | 00 18 275 | | 1 | Linsenschraube 5x30 | screw | vis | tornillo |
| 15 | 44 00 109 | | 1 | Gebläsekrümmer VS | elbow | coude | codo |
| 16 | 00 18 361 | | 4 | Linsenschraube 5x12 | screw | vis | tornillo |
| 17 | 40 73 466 | | 1 | Abdeckung | cover | couvercle | cubierta |
| 22 | 48 00 222 | | 1 | Griffhälfte links, kompl. | grip half left, compl. | poignée moitié gauche, compl. | empuñadura izquierda |
| 25 | 00 73 408 | | 1 | Drehfeder 1x9 | spring | ressort | resorte |
| 26 | 40 73 673 | | 1 | Gashebel | throttle lever | levier à gaz | palanca de gas |
| 27 | 00 55 101 | | 1 | Sicherungsscheibe 4 DIN 6799 | tension washer | rondelle | arandela |
| 30 | 40 74 938 | | 1 | Griffhälfte, außen | outer grip half | poignée ext., moitié | maneta |
| 33 | 00 18 356 | | 4 | Linsenschraube 4x20 | screw | vis | tornillo |
| 34 | 00 18 357 | | 3 | Linsenschraube 4x25 | screw | vis | tornillo |
| 35 | 00 64 415 27 | | 1 | Wellschlauch 8,5 | tube | tuyau | tubo |
| 36 | 00 84 477 | | 1 | Kurzschlußschalter | short circuit switch | interrupteur | interruptor |
| 37 | 28 00 445 | | 1 | Bowdenzug Gas | bowden cable gas | câble de bowden gaz | cable de bowden gas |
| 39 | 00 84 845 | | 1 | Massekabel, Kurzschlußkabel | short-circuit cable | câble court-circuit | cable cortocircuito |

| Bestell-Nr. Order-No. No. de Cde. Ref.-Nr. | Menge Quantity Nombres Cantidad | Seite page page pagina | Bestell-Nr. Order-No. No. de Cde. Ref.-Nr. | Menge Quantity Nombres Cantidad | Seite page page pagina | Bestell-Nr. Order-No. No. de Cde. Ref.-Nr. | Menge Quantity Nombres Cantidad | Seite page page pagina | Bestell-Nr. Order-No. No. de Cde. Ref.-Nr. | Menge Quantity Nombres Cantidad | Seite page page pagina |
|---|--|---------------------------------|---|--|---------------------------------|---|--|---------------------------------|---|--|---------------------------------|
| 00 11 274 | 1 | 7 | 00 44 144 | 5 | 6 | 20 31 144 | 2 | 4 | 27 00 421 | 1 | 6 |
| 00 12 309 | 2 | 4 | 00 54 237 | 2 | 4 | 20 31 249 25 | 1 | 4 | 28 00 445 | 1 | 7 |
| 00 18 274 | 1 | 4 | 00 55 101 | 1 | 7 | 20 31 965 | 1 | 5 | 40 16 320 | 1 | 4 |
| 00 18 274 | 1 | 4 | 00 55 267 | 2 | 4 | 20 43 113 | 1 | 4 | 40 31 131 | 2 | 4 |
| 00 18 274 | 2 | 4 | 00 61 280 | 1 | 6 | 20 43 114 | 1 | 4 | 40 35 904 | 1 | 6 |
| 00 18 274 | 2 | 6 | 00 61 360 | 1 | 4 | 20 43 120 | 1 | 4 | 40 42 577 | 2 | 6 |
| 00 18 275 | 2 | 6 | 00 61 361 | 1 | 6 | 20 43 122 | 1 | 4 | 40 43 103 | 1 | 4 |
| 00 18 275 | 1 | 7 | 00 62 280 | 2 | 4 | 20 48 282 | 1 | 4 | 40 46 100 | 2 | 6 |
| 00 18 276 | 4 | 5 | 00 63 195 25 | 1 | 5 | 20 48 386 | 1 | 4 | 40 61 131 | 1 | 4 |
| 00 18 336 | 1 | 4 | 00 64 300 | 270mm | 4 | 20 61 513 | 2 | 4 | 40 71 148 | 1 | 7 |
| 00 18 340 | 4 | 4 | 00 64 319 | 20mm | 4 | 20 61 519 | 1 | 4 | 40 71 288 | 1 | 7 |
| 00 18 342 | 2 | 5 | 00 64 407 | 80mm | 4 | 20 61 520 | 1 | 4 | 40 71 289 | 1 | 7 |
| 00 18 355 | 1 | 4 | 00 64 415 27 | 1 | 7 | 20 63 370 | 2 | 4 | 40 73 466 | 1 | 7 |
| 00 18 356 | 4 | 7 | 00 66 130 | 1 | 7 | 20 73 519 | 1 | 4 | 40 73 105 | 1 | 4 |
| 00 18 357 | 3 | 7 | 00 66 399 | 1 | 7 | 20 74 343 | 1 | 5 | 40 73 110 | 1 | 4 |
| 00 18 361 | 1 | 4 | 00 66 452 | 1 | 4 | 20 74 562 | 2 | 4 | 40 73 112 | 1 | 4 |
| 00 18 361 | 3 | 5 | 00 69 447 | 1 | 4 | 20 74 570 | 1 | 5 | 40 73 114 | 1 | 5 |
| 00 18 361 | 4 | 7 | 00 71 153 | 2 | 4 | 20 74 895 | 1 | 4 | 40 73 118 | 1 | 4 |
| 00 18 363 | 1 | 4 | 00 72 140 | 4 | 4 | 20 74 905 | 1 | 4 | 40 73 119 | 1 | 5 |
| 00 18 363 | 10 | 5 | 00 72 144 | 2 | 4 | 20 74 915 | 1 | 5 | 40 73 152 | 1 | 5 |
| 00 18 363 | 3 | 5 | 00 72 144 | 2 | 4 | 20 74 966 | 1 | 4 | 40 73 673 | 1 | 7 |
| 00 18 363 | 8 | 6 | 00 72 144 | 2 | 4 | 20 74 977 | 1 | 5 | 40 73 680 | 1 | 6 |
| 00 18 363 | 2 | 6 | 00 72 145 | 1 | 4 | 21 00 364 | 2 | 4 | 40 73 682 | 1 | 6 |
| 00 18 369 | 1 | 6 | 00 72 148 | 2 | 4 | 21 00 445 | 1 | 4 | 40 74 126 | 2 | 6 |
| 00 18 370 | 1 | 4 | 00 73 121 | 1 | 5 | 21 00 894 | 1 | 5 | 40 74 275 | 2 | 6 |
| 00 18 370 | 3 | 6 | 00 73 351 | 1 | 6 | 22 00 110 | 1 | 4 | 40 74 412 | 2 | 6 |
| 00 18 377 | 3 | 4 | 00 73 352 | 1 | 6 | 22 00 897 | 1 | 4 | 40 74 921 25 | 2 | 6 |
| 00 18 382 | 2 | 4 | 00 73 365 | 1 | 5 | 23 00 725 | 1 | 4 | 40 74 938 | 1 | 7 |
| 00 18 384 | 1 | 5 | 00 73 385 | 1 | 4 | 23 00 730 | 1 | 4 | 43 00 332 | 2 | 6 |
| 00 18 386 | 2 | 4 | 00 73 396 | 4 | 6 | 23 00 819 | 1 | 4 | 43 00 335 25 | 2 | 6 |
| 00 18 394 | 2 | 4 | 00 73 408 | 1 | 7 | 23 00 821 | 1 | 4 | 44 00 109 | 1 | 7 |
| 00 20 104 | 1 | 5 | 00 84 477 | 1 | 7 | 24 00 136 | 1 | 4 | 44 00 248 | 1 | 7 |
| 00 20 145 | 1 | 4 | 00 84 600 | 1 | 4 | 25 00107 | 1 | 4 | 48 00 222 | 1 | 7 |
| 00 21 257 | 1 | 7 | 00 84 845 | 1 | 7 | 26 00 284 | 1 | 5 | 60 43 107 | 4 | 6 |
| 00 28 137 | 2 | 4 | 00 98 101 | 1 | 6 | 26 00 300 | 1 | 5 | 60 63 322 | 1 | 4 |
| 00 28 137 | 2 | 4 | 05 10 992 | 1 | 5 | 27 00 312 | 1 | 6 | 6063328 | 1 | 6 |
| 00 28 137 | 2 | 5 | 05 10 993 | 1 | 5 | 27 00 322 | 1 | 4 | 6800349 | 1 | 4 |
| 00 30 102 | 2 | 6 | 05 10 994 | 1 | 5 | 27 00 333 | 1 | 6 | 8063247 | 2 | 6 |
| 00 31 611 | 1 | 5 | 20 00 108 | 1 | 4 | 27 00 395 | 1 | 6 | | | |
| 00 34 152 | 1 | 5 | 20 11 821 | 1 | 4 | 27 00 416 | 1 | 6 | | | |

Allgemeine Richtlinien für die Bestellung von Original SOLO Ersatzteilen:

Voraussetzung für eine reibungslose Erledigung sind folgende Angaben:

1. Ersatzteil-Bestellnummer
2. Gewünschte Anzahl
3. Typenbezeichnung des Geräts

Diese Ersatzteilliste ist für die Lieferung und Ausstattung von SOLO Erzeugnissen verbindlich.

Im Interesse der technischen Weiterentwicklung bleiben Konstruktionsänderungen vorbehalten.

General Directions for Ordering Original SOLO Spare Parts:

Spare parts orders are to be placed with the SOLO Sales Branch or SOLO Distributor. For correct and diligent processing of your order, please give the following information:

1. Spare Part number
2. Quantity
3. Model and serial number
4. Shipping instructions

Delivery is made in accordance with our general sales and delivery conditions. This spare parts list is non-committal for us with regard to delivery and layout of SOLO products. In favour of technical improvements, design modifications are subject to change without notice.

Directives générales pour les commandes de pièces de rechange d'origine SOLO:

Il est indispensable de préciser dans toutes les commandes de pièces:

1. - le numéro de référence de la pièce
2. - la quantité
3. - le type de la machine
4. - le mode d'expédition

Les livraisons sont effectuées dans le cadre de nos conditions générales de vente. Toutes modifications réservées.

Directivas Generales de pedido de la firma SOLO:

Por adelantado de un arreglo sin dificultades necesitamos siguientes indicaciones:

1. Número de repuesto
2. Numero de cantidad
3. Modelo y número de serial
4. Instrucción de Envío

Este lista de repuestos no es obligatoria para los envíos y/o forma de equipo de los productos SOLO.

En el interés del constante desarrollo debemos reservarnos el derecho de cambios.

SOLO Kleinmotoren GmbH

Postfach 60 01 52 Telefon 07031/301-0
D-71050 Sindelfingen Telefax 07031/301-130
Germany Export 07031/301-149

<http://www.solo-germany.com>
e-mail: info@solo-germany.com

Zentral-Ersatzteilservice
Telefon 07031/301-209
Telefax 07031/301-206 09/2001

