



Ingersoll

[HOME](#)

[TRACTORS](#)

INDEX

52SD, 62SD and 72SD

52SD Mower Deck Shell, Pulley Covers, Gauge Wheels and Attaching Parts	3
Pulleys, Blades, Belts, Spindles and Attaching Parts	5
62SD Mower Deck Shell, Pulley Covers, Gauge Wheels and Attaching Parts	7
Pulleys, Blades, Belts, Spindles and Attaching Parts	9
72SD Mower Deck Shell, Pulley Covers, Gauge Wheels and Attaching Parts	11
Pulleys, Blades, Belts, Spindles and Attaching Parts	13
Gear Box (52SD and 62SD Mower)	15
Mulching Kits (MK52SD, MK62-2B)	19

52TCSS AND 62TCSS

52TCSS Mower Deck Shell, Pulley Covers, Gauge Wheels and Attaching Parts	59
Pulleys, Blades, Belts, Spindles and Attaching Parts	61
62TCSS Mower Deck Shell, Pulley Covers, Gauge Wheels and Attaching Parts	63
Pulleys, Blades, Belts, Spindles and Attaching Parts	65
Gear Box (52TCSS and 62TCSS Mower)	67

INDEX

PAINT AND OIL

PAINT

REF.	PART NO.	DESCRIPTION	REQ'D
1	C 28849	BLACK - semi - gloss, 12 oz spray (2 per carton)	1
2	C 28850	BLACK - semi - gloss, quart (2 per carton)	1
3	C 28850	BLACK - semi - gloss, heat resistant, 12 oz spray (2 per carton)	1
4	C 28484	POWER RED - gloss, 12 oz spray (2 per carton)	1
5	C 28485	POWER RED - gloss, quart (2 per carton)	1
6	C 30870	SILVER - gloss, 12 oz. spray (2 per carton).....	1
7	C 31643	POWER RED - gloss, 1 oz touch up, (1 doz. per carton)	1

OIL

1	C 32776	OIL - SAE 30, SF, quart (12 per case)	1
2	C 32777	OIL - SAE 5W20, SF, quart (12 per case)	1
3	C 32778	OIL - SAE 20W40, SF, quart (12 per case)	1

INDEX

There is an index at the front of this catalog. The front index is an alphabetical index of the major groups or assemblies.

ILLUSTRATION

Each illustration in this catalog shows a group of parts or components. These parts and components are aligned approximately as the parts and components on your machine. Each part and component in an illustration has a reference number. These reference numbers are in a list on the page opposite of the illustration. Next to the reference number is the part number, description and required quantity of the part shown in the illustration.

UAR - "Use as required" indicates that the part quantity is variable.

NSS - "Not sold separately" indicates that the part is only available as component of an assembly or the part must be purchased locally. If the part is an assembly component, the description will be indented under the assembly description in the parts list.

O/L - "Obtain locally"

- "Footnotes" are added to a part number when more information is needed for identification. They only relate to the part numbers indicated. All orders must include the following information:

1. Correct part number.

PARTS ORDERS

2. Complete description of part or component.
3. Total quantity of each part or component.
4. Product model number.
5. All necessary product identification numbers.
6. Method for sending the parts.
7. Complete and correct address.

CATALOG REVISIONS

As the product changes, new pages will be available for your catalog. A notice will be issued.

IMPORTANT: Put all revisions into the catalog as soon as possible.

RIGHT HAND AND LEFT HAND IDENTIFICATION

The words right hand (RH) and left hand (LH) as used in this catalog indicate the direction while you are in the operator's seat in the normal operating position.

INDENTED DESCRIPTIONS

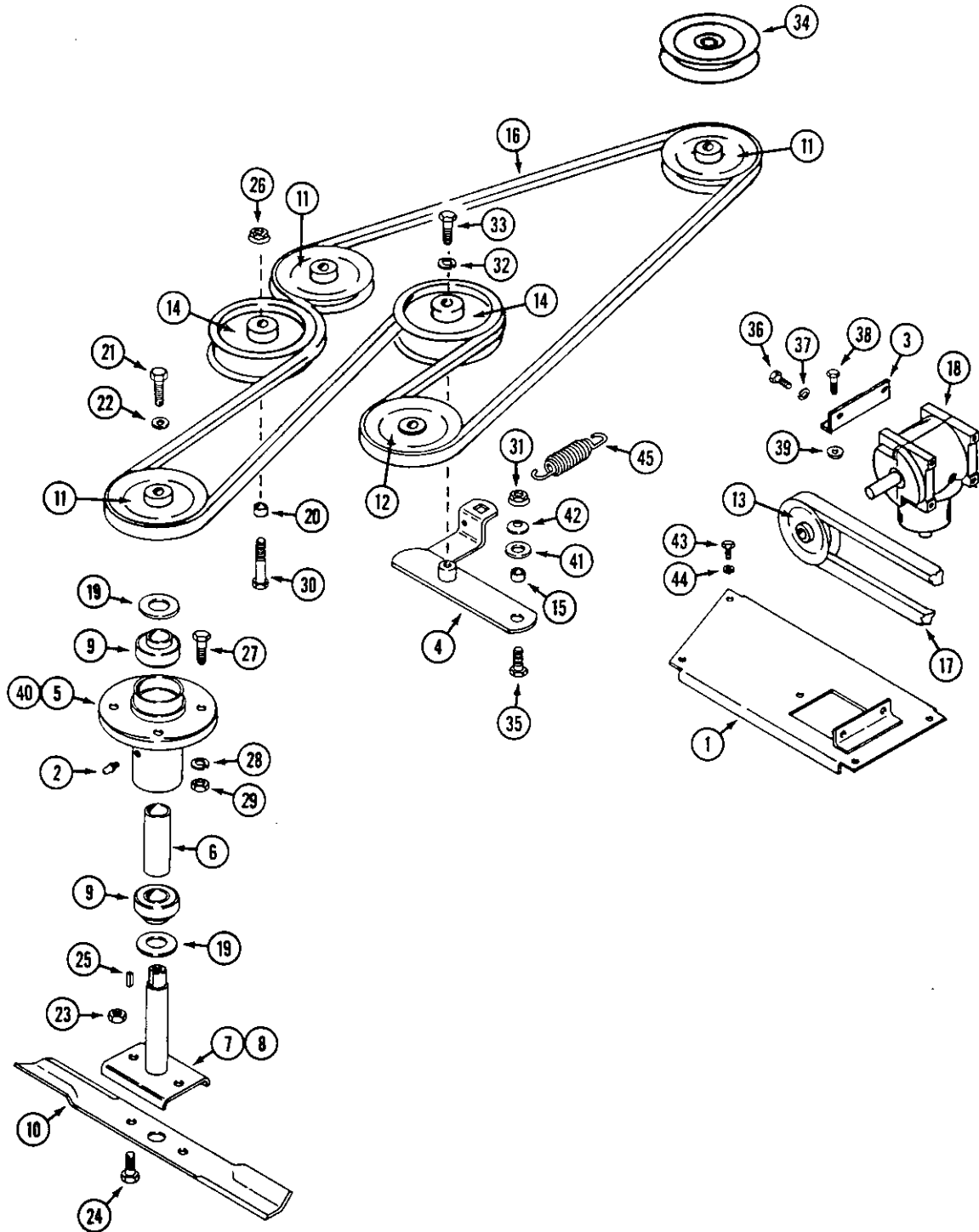
An assembly can have many components. The components of an assembly are indicated by an indented description. The quantity for an indented part is the total needed for that complete assembly. See the example.

REF.	PART NO.	DESCRIPTION	REQ'D
	C 55159	CYLINDER ASSY - rear steering	1
28	C 56208	SOCKET ASSY - rear cylinder	1
29	C 55956	PLUG - adjusting, socket assy	1
30	C 55957	SEAT- socket, ball.....	2
31	C 56210	SPRING-socket	1
32	C 56209	SEAT - socket spring	1
33	G 45175	CLAMP ASSY - socket assy	1
	16- 836	BOLT-1/2"x2-1/4" N.F. hex.....	1
34	132- 104	PIN-cotter, 3/16"x3"	1
35	C 55889	STUD - ball, socket & cylinder	2
36	13- 410	BOLT-1/4"x5/8"N.C.,hex	4
37	92- 4	LOCK WASHER - 1/4"SAE	4

52SD MOWER DECK AND ATTACHING PARTS

REF.	PART NO.	DESCRIPTION	REQ'D
1	C46663	DECK - 52'	1
2	C46703	CHUTE - foot guard	1
3	C46705	MOUNT - foot guard	1
4	C46700	COVER - R.H	1
5	C46699	COVER - center	1
6	C46698	COVER - L.H.	1
7	C46701	SHOE - skid	1
8	C37910	ROLLER - anti - scalp	1
9	C37911	SHAFT - roller	1
10	C45541	BRACKET - gauge wheel mount	2
11	C45542	MOUNT - gauge wheel	2
12	C46785	FORK	2
13	C37915	AXLE - wheel	2
14	C37916	WHEEL - gauge	2
	C29145	TIRE - 11 x 4.00 - 5	1
	C44496	RIM - 5" (includes bearings and grease fittings)	1
	C44499	BEARING - wheel	2
	219-10	FITTING - grease 1/4" - 28	1
15	113-2419	BOLT - 1/2" - 13 x 6-1/2"	2
16	C37920	BOLT - wing	4
17	C37921	NUT - gauge wheel handle	4
18	C37505	BREAKER - circuit, 10 amp	1
19	C37860	COLLAR - set	2
20	C37824	BEARING - 1"	4
21	C37922	PIN - "fas-tatch"	1
22	C29693	PIN - deck	1
23	C29029	PIN - cotter, hair	2
24	C46671	BRACKET - height adjust L.H.	2
25	C46672	BRACKET - height adjust R.H.	2
26	113-3	BOLT - 1/4" - 20 x 3/4"	10
27	192-19	LOCKWASHER - 1/4"	2
28	129-101	NUT - 1/4" - 20	2
29	131-71	NUT - 1/4" - 20 lock	2
30	C13716	WASHER - thrust	UAR
31	111-203	BOLT - 5/16" 18 x 1" carriage	6
32	219-20	FITTING - grease	2
33	85-58	SCREW - set 5/16" - 18 X 1/2" square head	2
34	192-20	LOCKWASHER - 5/16"	6
35	129-102	NUT - 5/16" - 18	4
36	192-23	LOCKWASHER - 1/2"	2
37	129-105	NUT - 1/2" - 13	2
38	113-102	BOLT - 5/16" - 18 x 3/4"	2
39	111-132	BOLT - 5/16" - 18 x 3/4" carriage	2
40	182-528	SCREW - #10 - 32 x 1/2"	2
41	193-1000	NUT - #10 - 32	2
42	C46694	COVER - center, small	1
43	C46695	STRAP - cover	1
44	C46696	COVER - center, rear	1
45	131-934	NUT - 1/4" - 20 flange lock	1
46	195-102	WASHER - 1/4"	3
47	131-911	NUT - 5/16" - 18 flange lock	2

52SD MOWER DECK AND ATTACHING PARTS

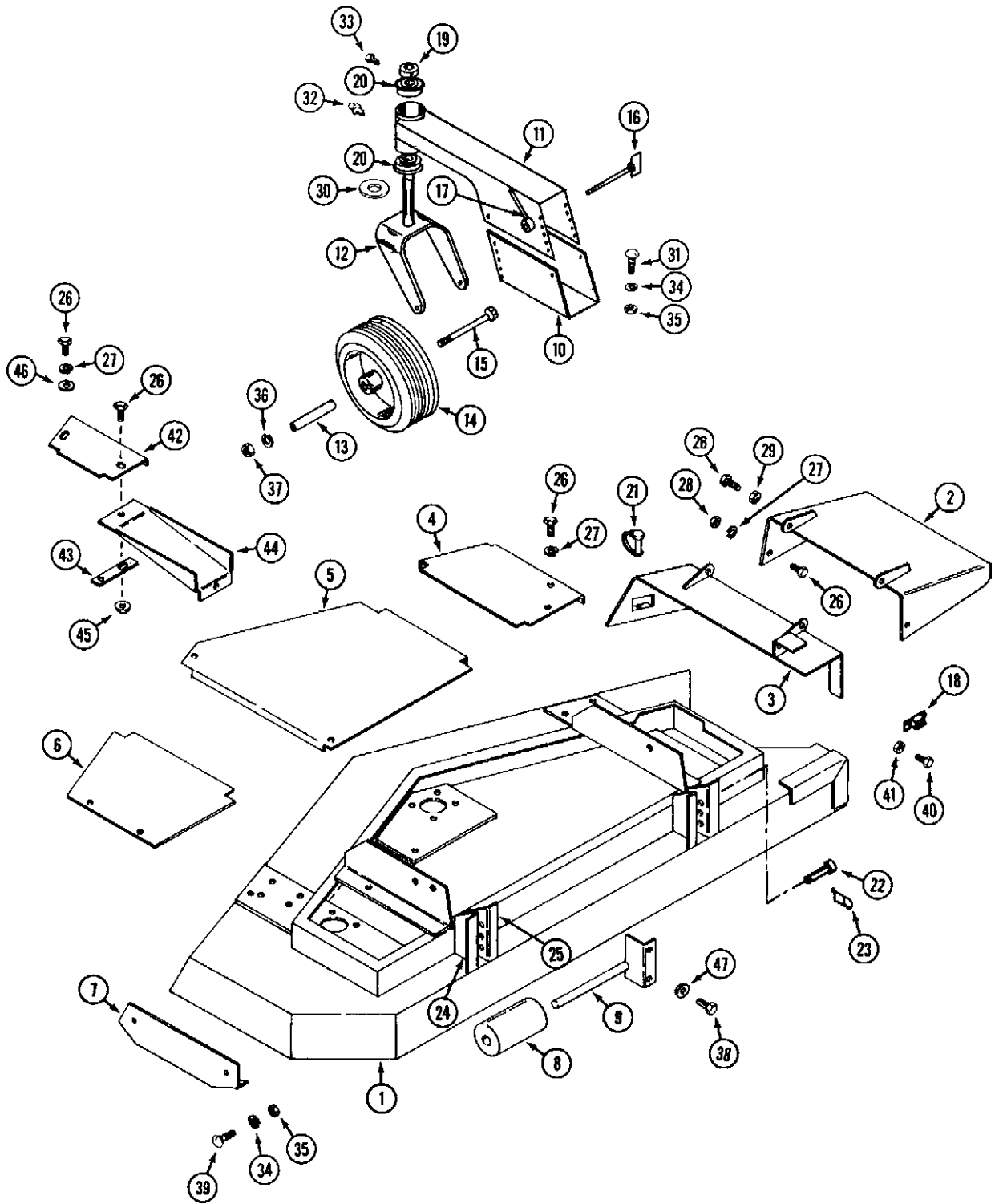


INDEX

52SD MOWER DECK AND ATTACHING PARTS

REF.	PART NO.	DESCRIPTION	REQ'D
1	C46692	MOUNT - gear box	1
2	219-20	FITTING - grease 1/4" - 28	3
3	C37877	ANGLE - gear box mount	1
4	C46688	ARM - idler.....	1
5	C46683	HOUSING - spindle	3
6	C46685	SPACER - spindle	3
7	C46680	SHAFT - spindle. short	3
8	C46778	SHAFT - spindle, long (used only when vac is installed)	1
9	C46686	BEARING - spindle.....	6
10	C44136	BLADE - mower	3
10	C45248	BLADE - mulching (not shown)	3
11	C37931	PULLEY - spindle	3
12	C37932	PULLEY - gear box output (use locktite)	1
13	C37892	PULLEY - gear box input (align w/engine and use locktite)	1
14	C46687	PULLEY - idler	2
15	C16573	SPACER	1
16	C37935	BELT - deck.....	1
17	C44241	BELT - drive.....	1
18	C37898	GEAR BOX - angle drive (repairs page)	1
19	C29575	SPACER - washer	6
20	C46726	SPACER	1
21	114-201	BOLT - 3/8" - 24 x 1-1/4" (use loctite).....	3
22	C45846	WASHER - 3/8" - 10 gage	3
23	131-1216	NUT - lock 3/8"	6
24	113-268	BOLT - 3/8" - 16 x 1".....	6
25	C29581	KEY - 3/16" X 1"	6
26	131-1352	NUT - 3/8" flange lock	1
27	113-312	BOLT - 7/16" - 14 x 1-1/4"	12
28	192-22	LOCKWASHER - 7/16".....	12
29	129-104	NUT - 7/16" - 14.....	12
30	113-213	BOLT - 3/8" - 16 x 2-1/4"	1
31	131-1352	NUT - 3/8" flange lock.....	1
32	192-21	LOCKWASHER - 3/8".....	1
33	113-208	BOLT - 3/8" 16 x 1-1/4".....	1
34	C46300	PULLEY - vac drive (used only when vac is installed)	1
35	113-207	BOLT - 3/8" - 16 x 1".....	1
36	113-103	BOLT - 5/16" - 18 x 1".....	4
37	192-20	LOCKWASHER - 5/16".....	4
38	113-102	BOLT - 5/16" - 18 x 3/4".....	1
39	131-911	NUT - 5/16" - 18 flange lock	1
40	C46682	HOUSING ASSEMBLY - spindle (includes ref. 2, 5,6,9).....	3
41	195-541	WASHER - 5/8.....	1
42	C28263	WASHER - spring	1
43	113-3	BOLT - 1/4" - 20 x 3/4".....	4
44	192-19	LOCKWASHER - 1/4".....	4
45	C14482	SPRING - tension	1

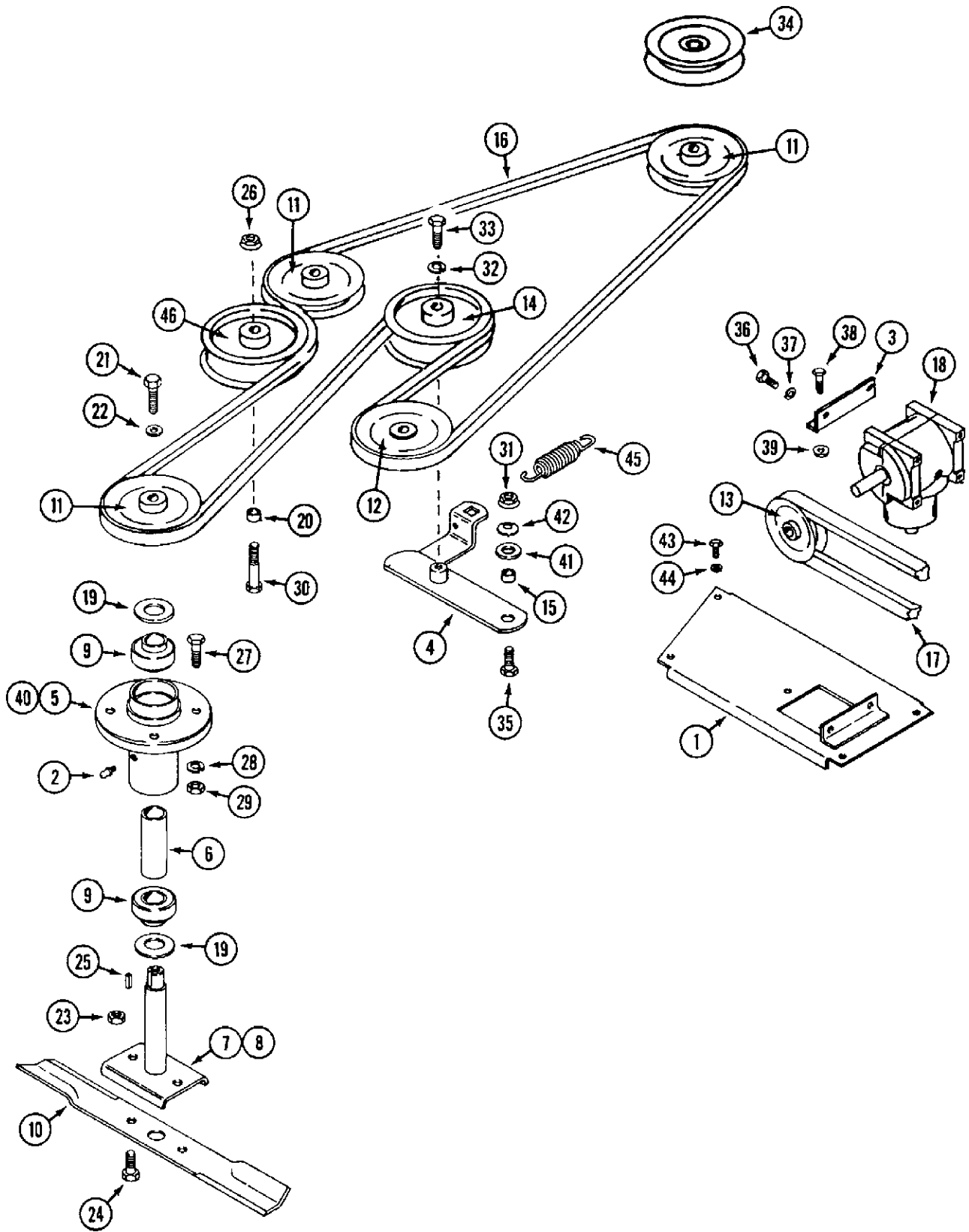
62SD MOWER DECK AND ATTACHING PARTS



62SD MOWER DECK AND ATTACHING PARTS

REF.	PART NO.	DESCRIPTION	REQ'D
1	C46711	DECK - 62	1
2	C41396	CHUTE foot guard	1
3	C46732	MOUNT - foot guard.....	1
4	C46725	COVER - R.H.....	1
5	C46724	COVER - center	1
6	C46723	COVER - L.H	1
7	C37956	SHOE - skid L.H.....	1
8	C37910	ROLLER - anti-skid	1
9	C37911	SHAFT - roller	1
10	C45541	BRACKET - gauge wheel.....	2
11	C45542	MOUNT - gauge wheel	2
12	C46785	FORK - gauge wheel.....	2
13	C37915	AXLE - gauge wheel	2
14	C37916	WHEEL - gauge	2
	C29145	TIRE - 11 x 4.00-5.....	1
	C44496	RIM - 5'. (includes bearings and grease fitting)	1
	C44499	BEARING - wheel	2
	219-10	FITTING - grease	1
15	113-2419	BOLT - 1/2" - 13 x 6-1/2"	2
16	C37920	BOLT - wing	4
17	C37921	NUT - gauge wheel handle	4
18	C37505	BREAKER - circuit - 10 amp	1
19	C37860	COLLAR - set 1"	2
20	C37824	BEARING - 1"	4
21	C37922	PIN - "fas-tatch".....	1
22	C29693	PIN - deck	2
23	C29029	PIN - cotter, hair.....	2
24	C46671	BRACKET - height adjust L.H	2
25	C46672	BRACKET - height adjust R.H	2
26	113-3	BOLT - 1/4" - 20 x 3/4"	4
27	192-19	LOCKWASHER - 1/4"	2
28	129-101	NUT - 1/4 - 20	2
29	131-71	NUT - 1/4" - 20 lock.....	2
30	C13716	WASHER - thrust	UAR
31	111-203	BOLT - 5/16" - 18 x 1" carriage	6
32	219-20	FITTING - grease	2
33	85-58	SCREW - set 5/16" - 18 x 1/2" square head	2
34	192-20	LOCKWASHER - 5/16"	8
35	129-102	NUT - 5/16" - 18	8
36	192-23	LOCKWASHER - 1/2"	2
37	129-105	NUT - 1/2" - 13	2
38	113-102	BOLT - 5/16" - 18 x 3/4"	2
39	111-132	BOLT - 5/16" - 18 x 3/4" carriage	2
40	182-528	SCREW - #10 - 32 x 1/2.....	2
41	193-1000	NUT - # 10-32	2
42	C46722	COVER - center, small.....	1
43	C46695	STRAP - cover	1
44	C46696	COVER - center, rear.....	1
45	131-934	NUT - 1/4" - 20 flange lock	1
46	195-102	WASHER - 1/4	3
47	131-911	NUT - 5/16" - 18 flange lock	2
48	C37957	SHOE - skid R.H	1

6ZSD MOWER DRIVE

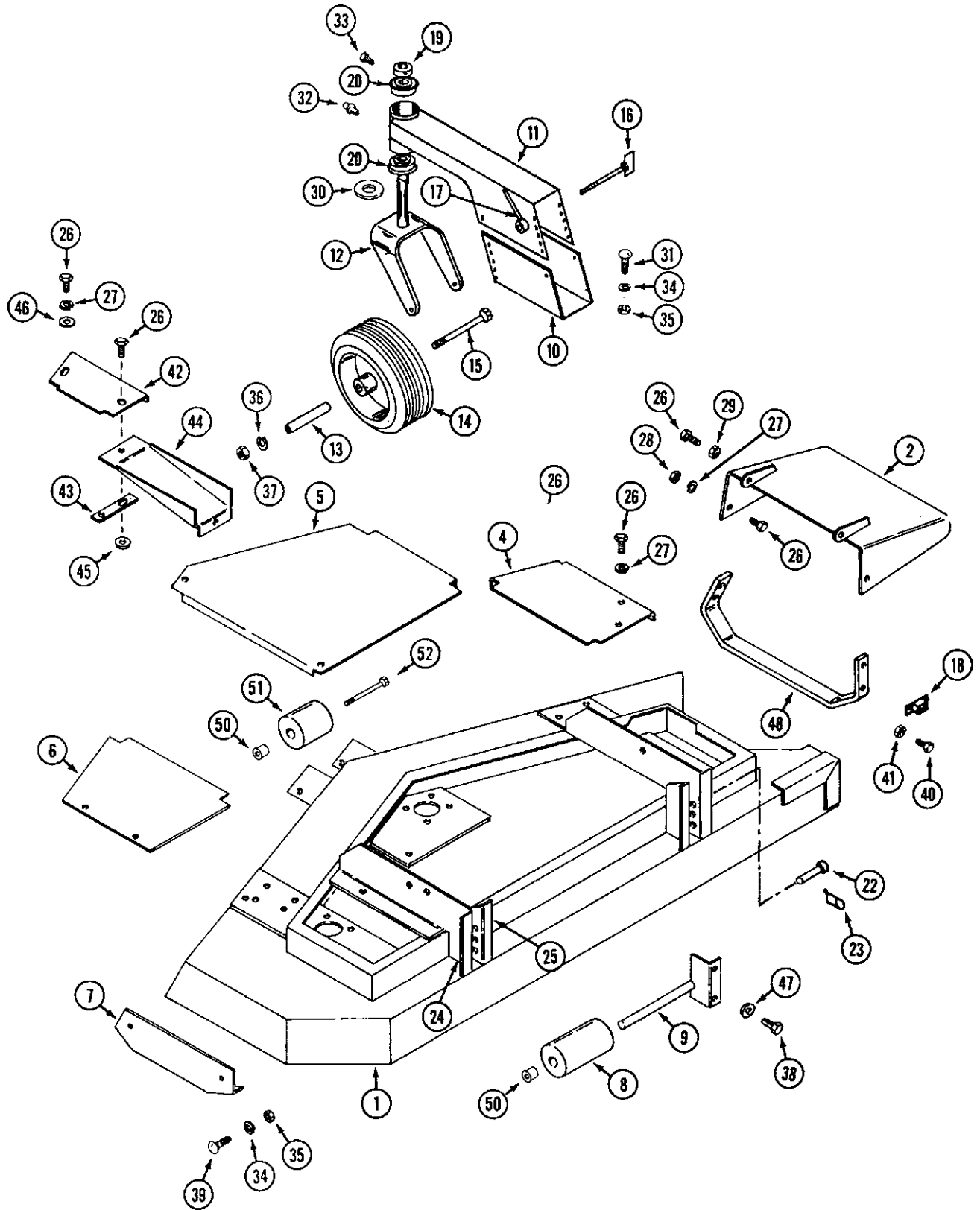


INDEX

6ZSD MOWER DRIVE

REF.	PART NO.	DESCRIPTION	REQ'D
1	C46720	MOUNT - gear box	1
2	219-20	FITTING - grease 1/4 - 28	3
3	C37877	ANGLE - gear box mount	1
4	C46718	ARM - idler.....	1
5	C46683	HOUSING - spindle	3
6	C46685	SPACER - spindle	3
7	C46680	SHAFT - spindle, short	3
8	C46778	SHAFT - spindle, long (used only when vac is installed)	1
9	C46686	BEARING - spindle.....	6
10	C44138	BLADE	3
10	C45511	BLADE - mulching (not shown)	3
11	C37950	PULLEY - spindle	4
12	C37932	PULLEY - gear box output (use Loctite).....	1
13	C37892	PULLEY - gear box input (align with engine and use loctite)	1
14	C46687	PULLEY - idler 5".....	1
15	C16573	SPACER	1
16	C38929	BELT - deck.....	1
17	C44241	BELT - drive.....	1
18	C37898	GEAR BOX - angle drive (repairs page)	1
19	C29575	WASHER-spacer	6
20	C46726	SPACER	1
21	114-201	BOLT - 3/8 - 24 x 1-1/4" (use loctite).....	3
22	C45846	WASHER - 3/8", 10 gage	3
23	131-1216	NUT - lock 3/8".....	6
24	113-268	BOLT - 3/8" - 16 x 1".....	6
25	C29581	KEY - 3/16" x 3/16" x 1"	6
26	131-1352	NUT - 3/8" flange lock.....	1
27	113-312	BOLT - 7/16" - 14 X 1-1/4".....	12
28	192-22	LOCKWASHER - 7/16".....	12
29	129-104	NUT - 7/16" - 14.....	12
30	113-213	BOLT - 3/8" - 16 x 2-1/4"	1
31	131-1352	NUT - 3/8" flange lock.....	1
32	192-21	LOCKWASHER - 3/8".....	1
33	113-208	BOLT - 3/8" - 16 x 1-1/4"	1
34	C46301	PULLEY - vac drive (used only when vac is installed)	1
35	113-207	BOLT - 3/8" - 16 x 1".....	1
36	113-103	BOLT- 5/16" - 18 x 1".....	4
37	192-20	LOCKWASHER - 5/16".....	4
38	113-102	BOLT - 5/16" - 18 x 3/4".....	1
39	131-911	NUT - 5/16" - 18 flange lock	2
40	C46682	HOUSING ASSEMBLY - spindle (includes ref. 2, 5, 6, 9).....	3
41	195-541	WASHER - 5/8".....	1
42	C28263	WASHER - spring.....	1
43	113-3	BOLT - 1/4" -20 x 3/4".....	4
44	192-19	LOCKWASHER - 1/4".....	4
45	C 14482	SPRING - tension	1
46	C45649	PULLEY - idler, idler 5-1/2".....	1

72" MOWER DECK AND ATTACHING PARTS

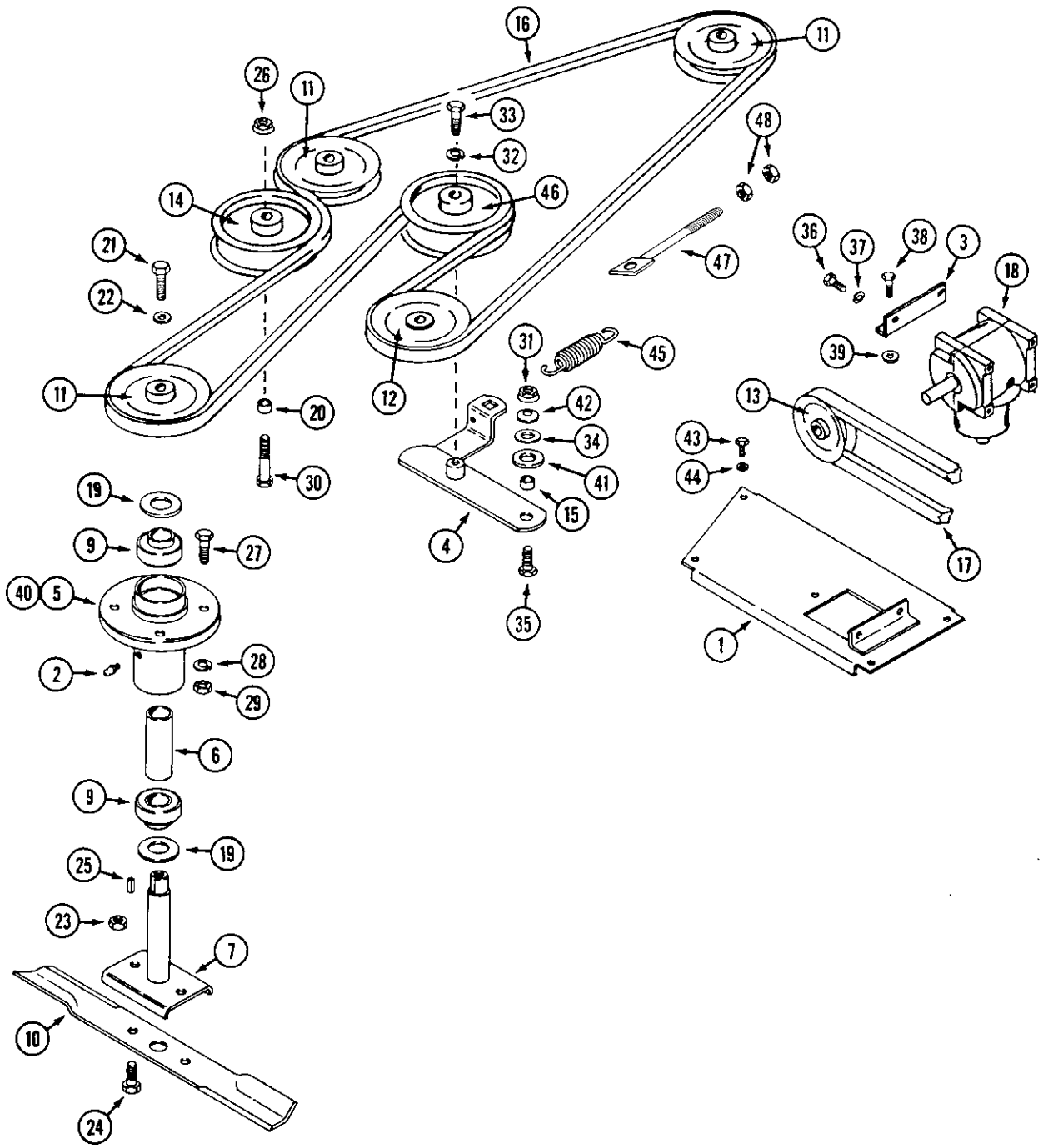


INDEX

72" MOWER DECK AND ATTACHING PARTS

REF.	PART NO.	DESCRIPTION	REQ'D
1	C47013	DECK – 72"	1
2	C47053	CHUTE foot guard	1
4	C47043	COVER - R.H.....	1
5	C47042	COVER - center	1
6	C47041	COVER - L.H	1
7	C47051	SHOE - skid L.H	1
8	C37910	ROLLER - anti-skid.....	1
9	C37911	SHAFT - roller.....	1
10	C47056	BRACKET - gauge wheel	2
11	C46786	MOUNT - gauge wheel	2
12	C46785	FORK - gauge wheel	2
13	C37915	AXLE - gauge wheel	2
14	C37916	WHEEL - gauge.....	2
	C29145	TIRE - 11 x 4.00-5	1
	C44496	RIM – 5" (Includes bearings and grease fitting)	1
	C44499	BEARING - wheel.....	2
	219-10	FITTING - grease.....	1
15	113-2419	BOLT - 1/2" - 13 x 6-1/2"	2
16	C37920	BOLT - wing.....	4
17	C37921	NUT - gauge wheel handle.....	4
18	C37505	BREAKER - circuit - 10 amp.....	1
19	C37860	COLLAR - set 1"	2
20	C37824	BEARING - 1"	4
22	C29693	PIN - deck	2
23	C29029	PIN - cotter, hair.....	2
24	C46671	BRACKET - height adjust L.H.....	2
25	C46672	BRACKET - height adjust R.H.....	2
26	113-3	BOLT - 1/4" - 20 x 3/4"	8
27	192-19	LOCKWASHER - 1/4"	9
28	129-101	NUT - 1/4 - 20	2
29	131-71	NUT - 1/4" - 20 lock	8
30	C13716	WASHER - thrust.....	UAR
31	111-203	BOLT - 5/16" - 18 x 1" carriage.....	6
32	219-20	FITTING - grease.....	2
33	85-58	SCREW - set 5/16" - 18 x 1/2" square head.....	2
34	192-20	LOCKWASHER - 5/16"	8
35	129-102	NUT - 5/16" - 18.....	8
36	192-23	LOCKWASHER - 1/2"	2
37	129-105	NUT - 1/2" - 13.....	2
38	113-102	BOLT - 5/16" - 18 x 3/4"	2
39	111-132	BOLT - 5/16" - 18 x 3/4" carriage.....	2
40	182-528	SCREW - #10 - 32 x 1/2	2
41	193-1000	NUT - #10 - 32	2
42	C46722	COVER - center, small	1
43	C46695	STRAP - cover.....	1
44	C46696	COVER - center, rear	1
45	131-934	NUT - 1/4" - 20 flange lock	1
46	195-102	WASHER - 1/4.....	3
47	131-911	NUT - 5/16" - 18 flange lock	2
48	C47049	SHOE - skid R.H.....	1
50	C47096	BUSHING – shoulder.....	2
51	C47044	ROLLER – anti scalp	1
52	C47045	SHAFT – front roller.....	1

72" DECK DRIVE AND ATTACHING PARTS



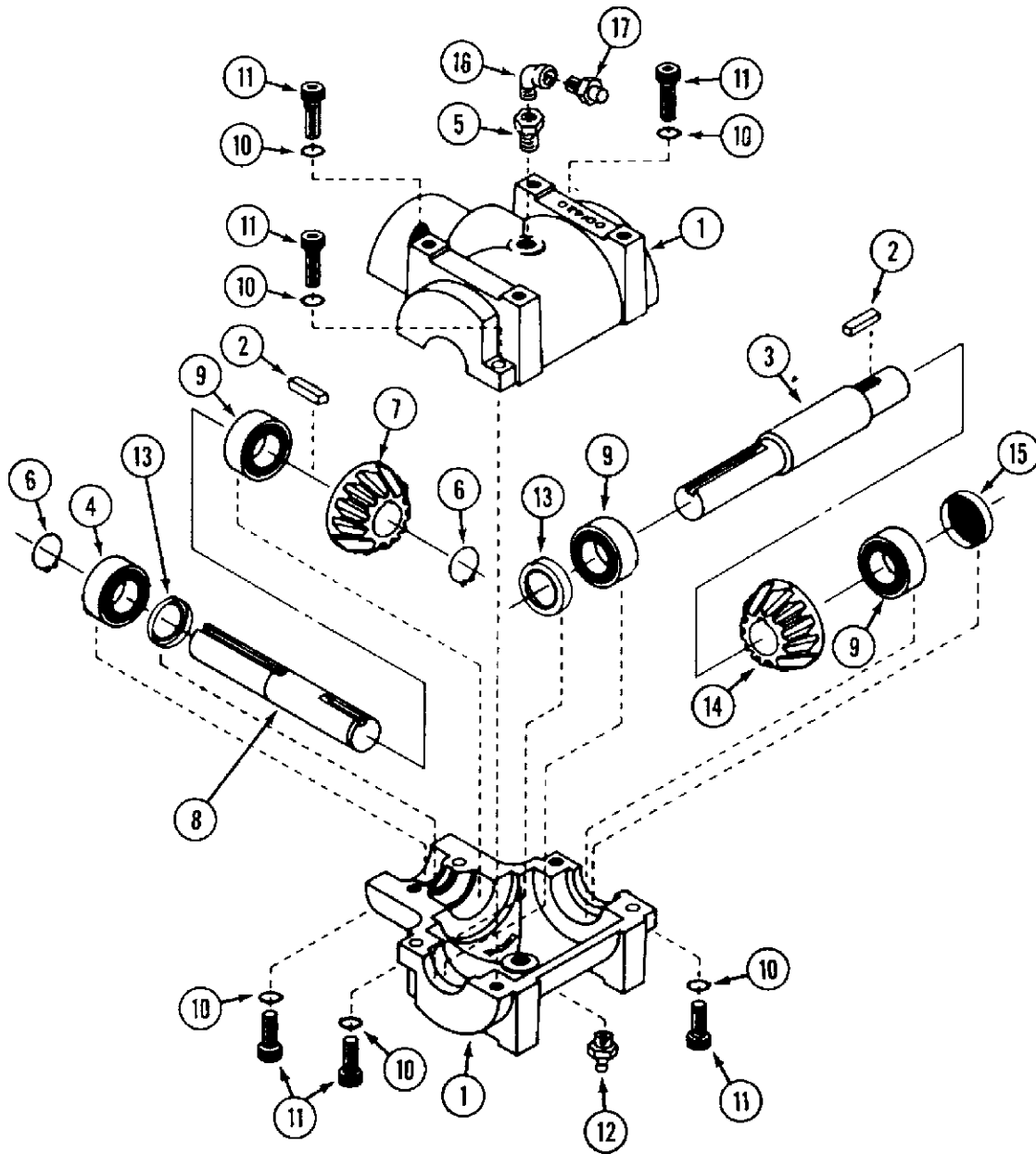
INDEX

72" DECK DRIVE AND ATTACHING PARTS

REF.	PART NO.	DESCRIPTION	REQ'D
1	C47035	MOUNT - gear box	1
2	219-20	FITTING - grease 1/4" - 28	3
3	C47034	ANGLE - gear box mount	1
4	C47097	ARM - idler	1
5	C46683	HOUSING - spindle	3
6	C46685	SPACER - spindle	3
7	C46680	SHAFT - spindle. short	3
9	C46686	BEARING - spindle	6
10	C47030	BLADE - mower	3
11	C37950	PULLEY - spindle	3
12	C47032	PULLEY - gear box output (use loctite)	1
13	C47033	PULLEY - gear box input (align w/engine and use loctite)	1
14	C46687	PULLEY - idler	2
15	C16573	SPACER	1
16	C47031	BELT - deck	1
17	C44241	BELT - drive	1
18	C47038	GEAR BOX - angle drive	1
19	C29575	SPACER - washer	6
20	C46726	SPACER	1
21	114-201	BOLT - 3/8" - 24 x 1-1/4" (use loctite)	3
22	C45846	WASHER - 3/8" - 10 gage	3
23	131-1216	NUT - lock 3/8"	6
24	113-268	BOLT - 3/8" - 16 x 1"	6
25	C29581	KEY - 3/16" x 1"	6
26	131-1352	NUT - 3/8" flange lock	1
27	113-312	BOLT - 7/16" - 14 x 1-1/4"	12
28	192-22	LOCKWASHER - 7/16"	12
29	129-104	NUT - 7/16" - 14	12
30	113-213	BOLT - 3/8" - 16 x 2-1/4"	1
31	131-1352	NUT - 3/8" flange lock	1
32	192-21	LOCKWASHER - 3/8"	1
33	113-208	BOLT - 3/8" 16 x 1-1/4"	1
34	C28246	SHIM - washer	1
35	113-207	BOLT - 3/8" - 16 x 1"	1
36	113-207	BOLT - 5/16" - 18 x 1"	4
37	192-21	LOCKWASHER - 5/16"	4
38	113-206	BOLT - 5/16" - 18 x 3/4"	1
39	131-938	NUT - 5/16" - 18 flange lock	1
40	C46682	HOUSING ASSEMBLY - spindle (includes ref. 2, 5, 6, 9)	3
41	195-541	WASHER - 5/8	1
42	C28263	WASHER - spring	1
43	113-4	BOLT - 1/4" - 20 x 1.0"	4
44	192-19	LOCKWASHER - 1/4"	4
45	C31606	SPRING - tension	1
46	C45649	Pulley - Idler	1
47	C47048	Bolt - spring tension	1
48	129-103	Nut - 3/8" - 16, hex	1

GEARBOX
52SD AND 62SD
Prior to PIN #010706048

AFTER THIS PIN



INDEX

GEAR BOX

(Curtis)

Prior to Serial #010706048

AFTER THIS PIN

REF.	PART NO.	DESCRIPTION	REQ'D
	C37898	GEAR BOX	1
1	C37959	HOUSING - half	2
2	C29581	KEY - 3/16" x 3/16" x 1"	2
3	C37960	SHAFT - input	1
4	C37961	BEARING - ball	1
5	221-84	BUSHING - pipe 1/4" x 1/8"	1
6	C37963	RING - retaining	2
7	C37964	GEAR - output shaft.....	1
8	C37965	SHAFT - output.....	1
9	C37966	BEARING - ball	3
10	C37967	LOCKWASHER	6
11	C37968	CAP SCREW - allen head	6
12	219-23	FITTING - grease 1/4" NPT	1
13	C37969	SEAL - shaft.....	2
14	C37970	GEAR - input shaft.....	1
15	C37971	PLUG - expansion	1
16	221-411	ELBOW - street 1/8" x 90°	1
17	C28241	VALVE - relief	1
	C43346	GREASE - synthetic, cartridge	1

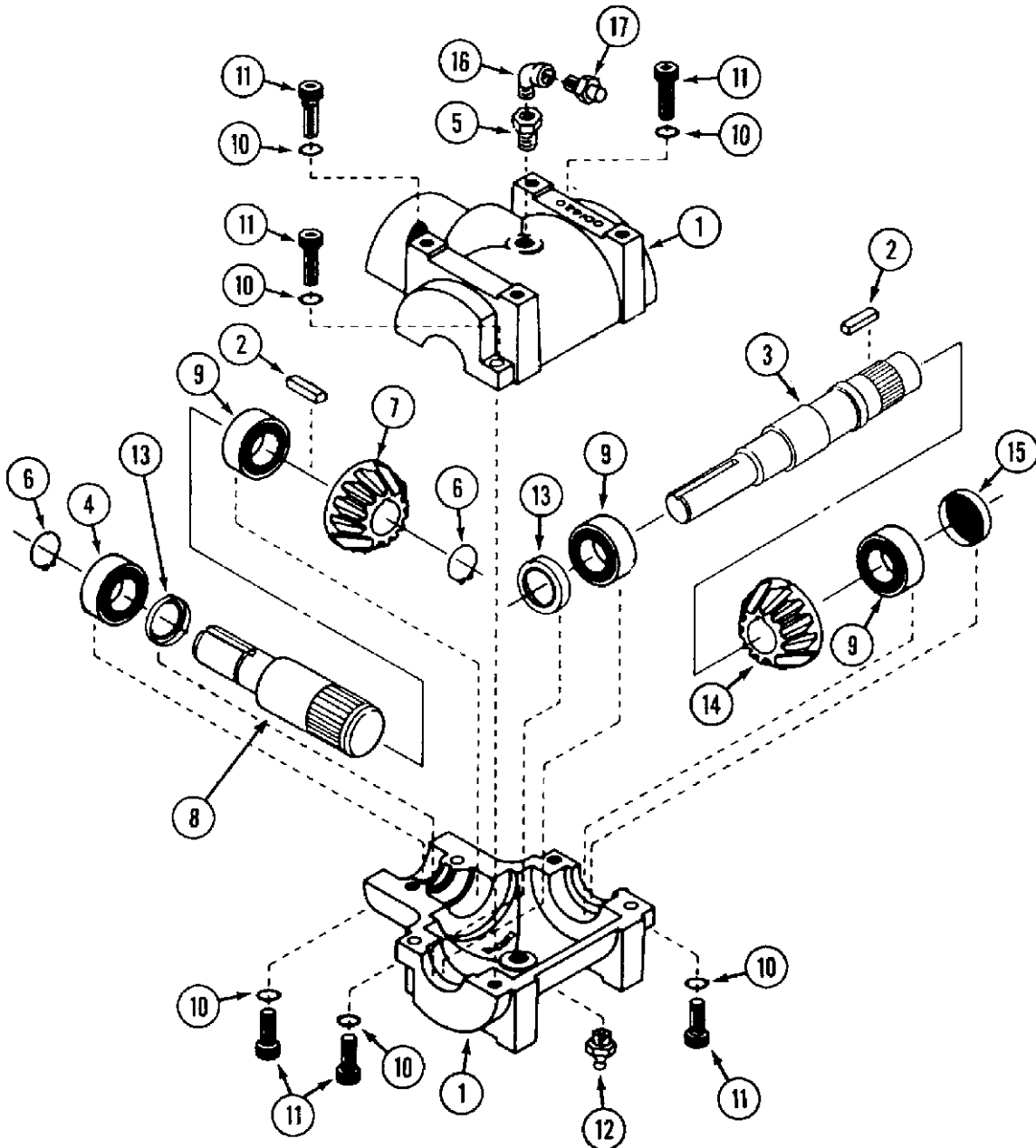
GEAR BOX

52SD & 62SD

(Curtis)

After PIN #010706048

BEFORE THIS PIN



INDEX

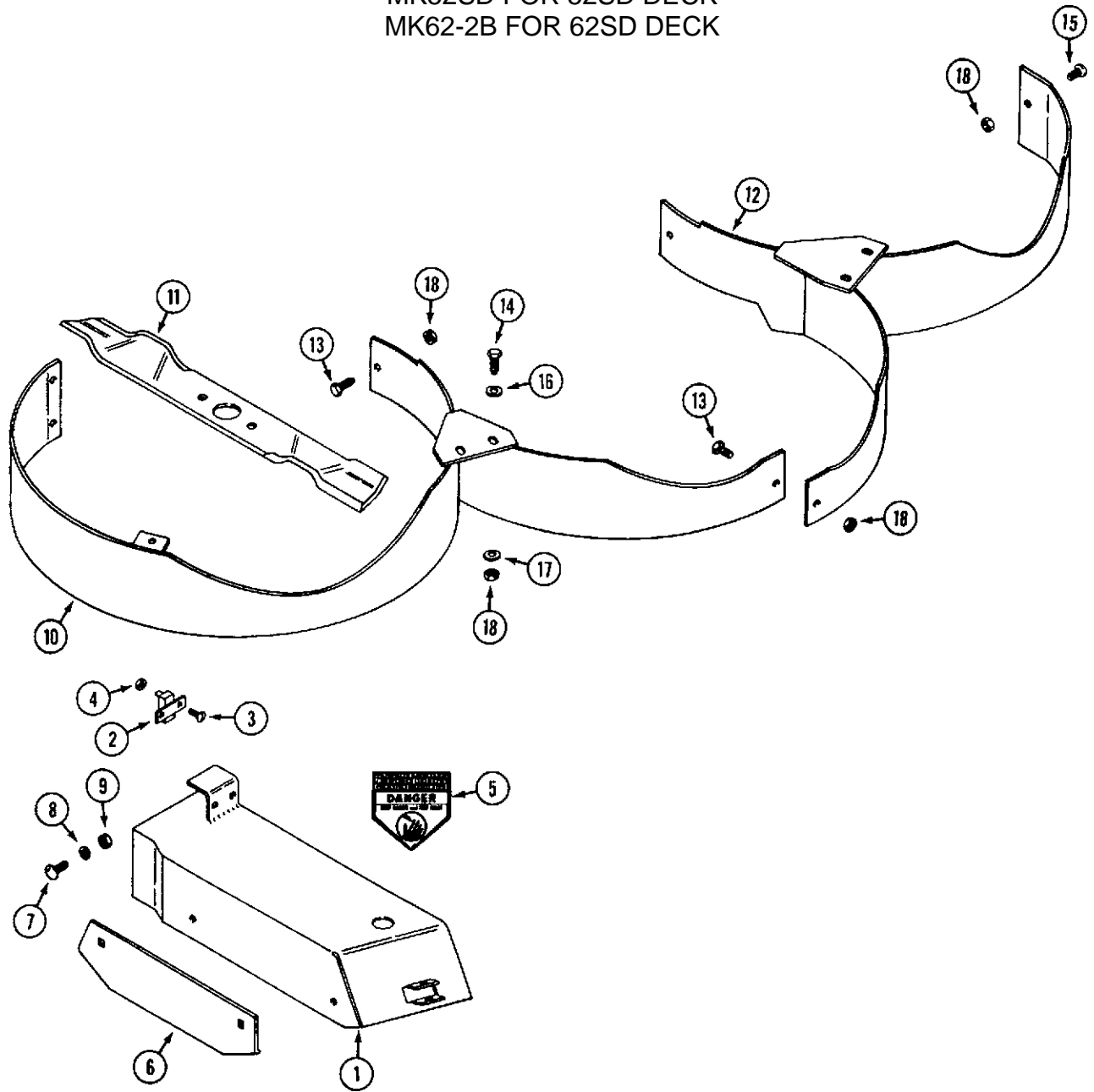
GEAR BOX
52SD & 62SD
(Curtis)
After PIN #010706048

BEFORE THIS PIN

REF.	PART NO.	DESCRIPTION	REQ'D
	C46942	GEAR BOX	1
1	C43765	HOUSING - half	2
2	C43772	RING - retaining	1
3	C43768	SHAFT - input	1
4	C43770	BEARING - ball	1
5	221-84	BUSHING - pipe 1/4" x 1/8"	1
6	C37963	RING - retaining	1
7	C43769	GEAR - output shaft.....	1
8	C43771	SHAFT - output.....	1
9	C43766	BEARING - ball	3
10	C43776	LOCKWASHER	6
11	C43775	CAP SCREW - allen head.....	6
12	219-23	FITTING - grease 1/4" NPT	1
13	C43767	SEAL - shaft.....	2
14	C43774	GEAR - input shaft.....	1
15	C43773	PLUG - expansion	1
16	221-411	ELBOW - street 1/8" x 90°	1
17	C28241	VALVE - relief	1
	C43346	GREASE - synthetic, cartridge	1

INDEX

MULCHING KITS
MK52SD FOR 52SD DECK
MK62-2B FOR 62SD DECK



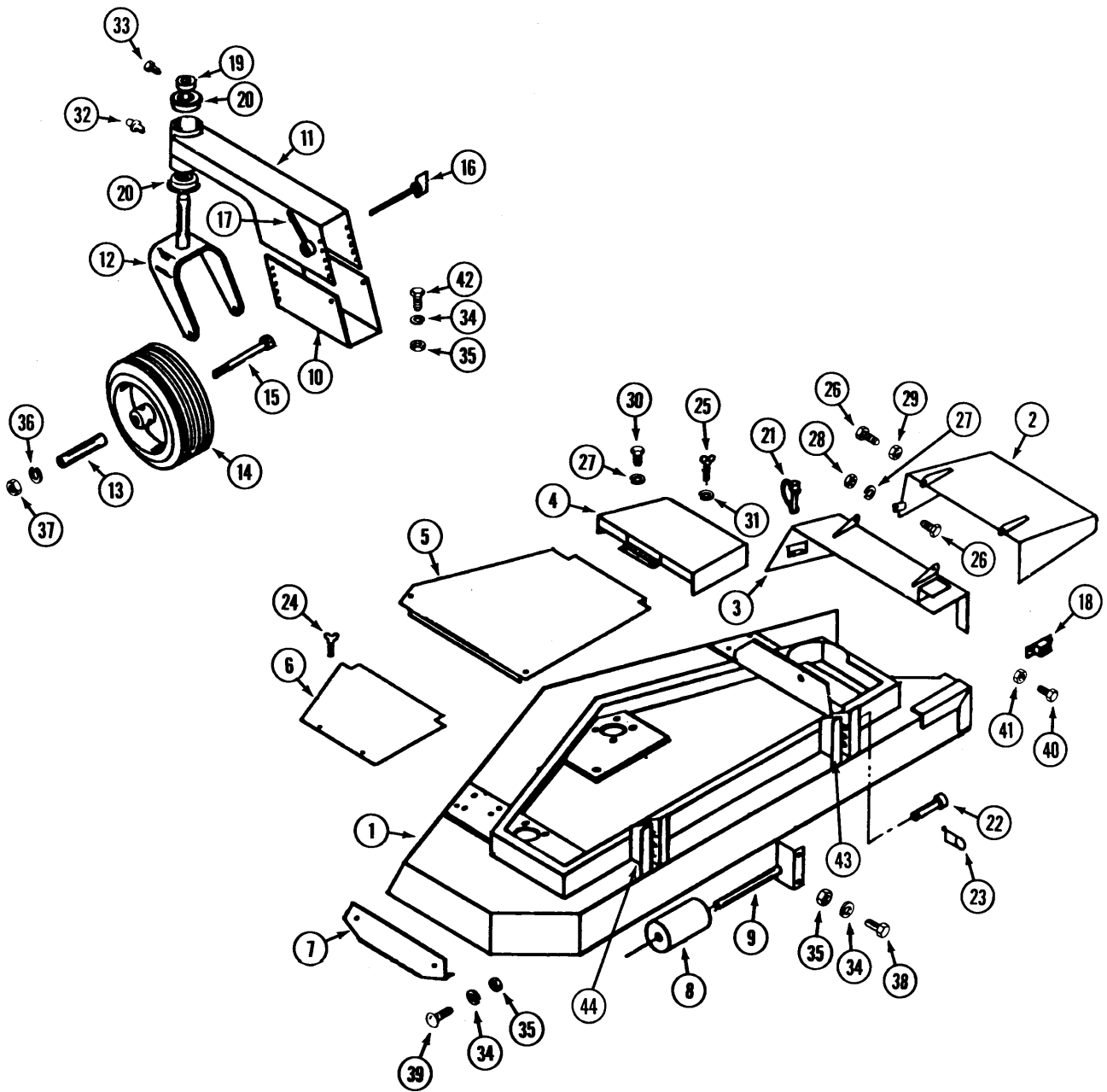
INDEX

**MULCHING KITS
MK52SD FOR 52SD DECK
MK62SD FOR 62SD DECK**

REF.	PART NO.	DESCRIPTION	REQ'D
1	C46746	CAP - end (MK52SD)	1
1	C45512	CAP - end (MK62SD) shown	1
2	C37505	BREAKER - 10 amp	1
3	182-528	SCREW - #10 - 32 x 1/2"	2
4	193-1000	NUT- #10-32 lock.....	2
5	C37494	DECAL - "Danger"	1
6	C37956	SHOE - skid (MK62-2B)	1
6	C46701	SHOE - skid (MK52SD)	1
7	111-132	BOLT - 5/16" - 18 x 3/4" carriage.....	2
8	192-20	WASHER - lock 5/16"	2
9	129-102	NUT - 5/16" - 18.....	2
10	C46749	BAFFLE - R.H. (MK52SD).....	1
10	C45516	BAFFLE - RH. (MK62SD) shown	1
11	C45901	BLADE - (18") (MK52SD) 1-bolt mounting	3
11	C45248	BLADE - (18") (MK52SD) 2-bolt mounting	3
11	C46050	BLADE - (MK62) (21.5") 1-bolt mounting	3
11	C45511	BLADE - (MK62-2B) (21.5") shown, 2 bolt mounting	3
12	C46751	BAFFLE - L.H. (MK52SD)	1
12	C45519	BAFFLE - L.H. (MK62) shown	1
13	113-102	BOLT - 5/16" - 18 x 3/4".....	6
14	113-103	BOLT - 5/16" - 18 x 1'	4
15	C42056	SCREW - 5/16" x 18 x 5/8"	1
16	195-521	WASHER - 5/16" x 5/8"	7
17	195-103	WASHER - 3/8" x 7/8"	4
18	131 -69	NUT - 5/16" - 18 lock	11

INDEX

MOWER DECK AND ATTACHING PARTS (52")

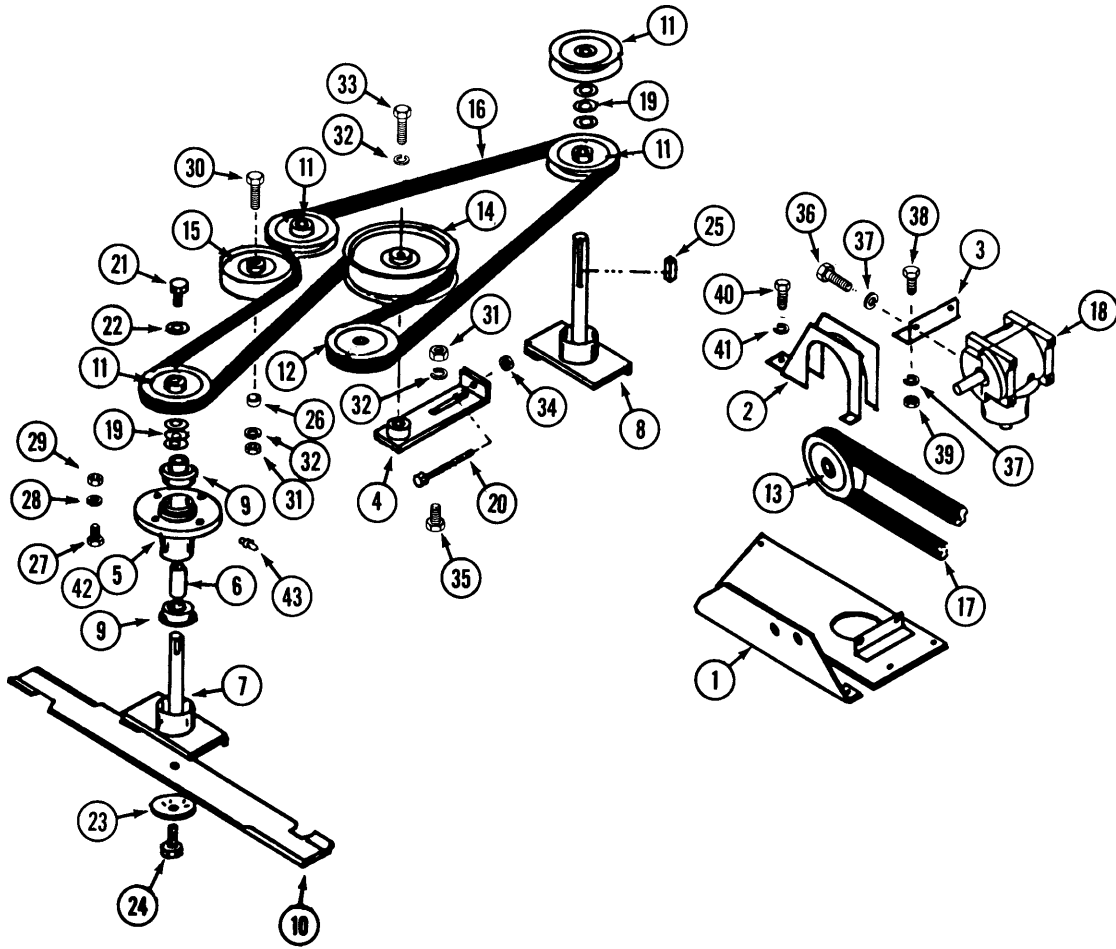


INDEX

52" MOWER DECK AND ATTACHING PARTS

REF.	PART NO.	DESCRIPTION	REQ'D
1	C44086	DECK - 52"	1
2	C39208	CHUTE - foot guard	1
3	C39209	MOUNT - foot guard.....	1
4	C39204	COVER - pulley.....	1
5	C39203	COVER - center	1
6	C39200	COVER - L.H.....	1
7	C37942	SHOE - skid	1
8	C37910	ROLLER - anti-scalp	1
9	C37911	SHAFT - roller	1
10	C37912	BRACKET - gauge wheel mount	2
11	C37913	MOUNT - gauge wheel	2
12	C37914	FORK	2
13	C37915	AXLE - wheel	2
14	C37916	WHEEL - gauge	2
	C37917	TIRE - 11 x 4.00 - 5	1
	C37918	RIM - 5"	1
	C44499	BEARING - wheel.....	2
15	113-2419	BOLT - 1/2" - 13 x 6-1/2"	2
16	C37920	BOLT - wing	4
17	C37921	NUT - gauge wheel handle	4
18	C37505	BREAKER - circuit, 10 amp	1
19	C37860	COLLAR - set.....	2
20	C37824	BEARING - 1".....	4
21	C37922	PIN - "fas-tatch"	1
22	C10821	PIN - deck.....	1
23	C29029	PIN - cotter, hair	2
24	NSS	SCREW - thumb 1/4" - 20 x 1/2" (use 113-3 and 192-19)	4
25	NSS	SCREW - wing 1/4" -20 x 1" (use 113-3)	1
26	113-3	BOLT - 1/4" - 20 x 3/4"	4
27	192-19	LOCKWASHER - 1/4"	2
28	129-101	NUT - 1/4" -20	2
29	131-71	NUT - 1/4" - 20 lock.....	2
30	113-1	BOLT - 1/4" - 20 x 1"	2
31	195-102	WASHER - 1/4"	1
32	C37993	FITTING - grease	2
33	C37756	SCREW - set 5/16" - 18 x 1/2" square head	2
34	192-20	LOCKWASHER - 5/16"	6
35	129-102	NUT - 5/16" - 18	6
36	192-23	LOCKWASHER - 1/2"	2
37	129-105	NUT- 1/2" -13	2
38	113-102	BOLT - 5/16" - 18 x 3/4"	2
39	111-202	BOLT - 5/16" - 18 x 3/4" carriage	2
40	182-528	SCREW - #10 - 32 x 1/2"	2
41	C37598	NUT - #10-32	2
42	111-203	BOLT - 5/16" - 18 x 1" carriage	6

52" MOWER DRIVE



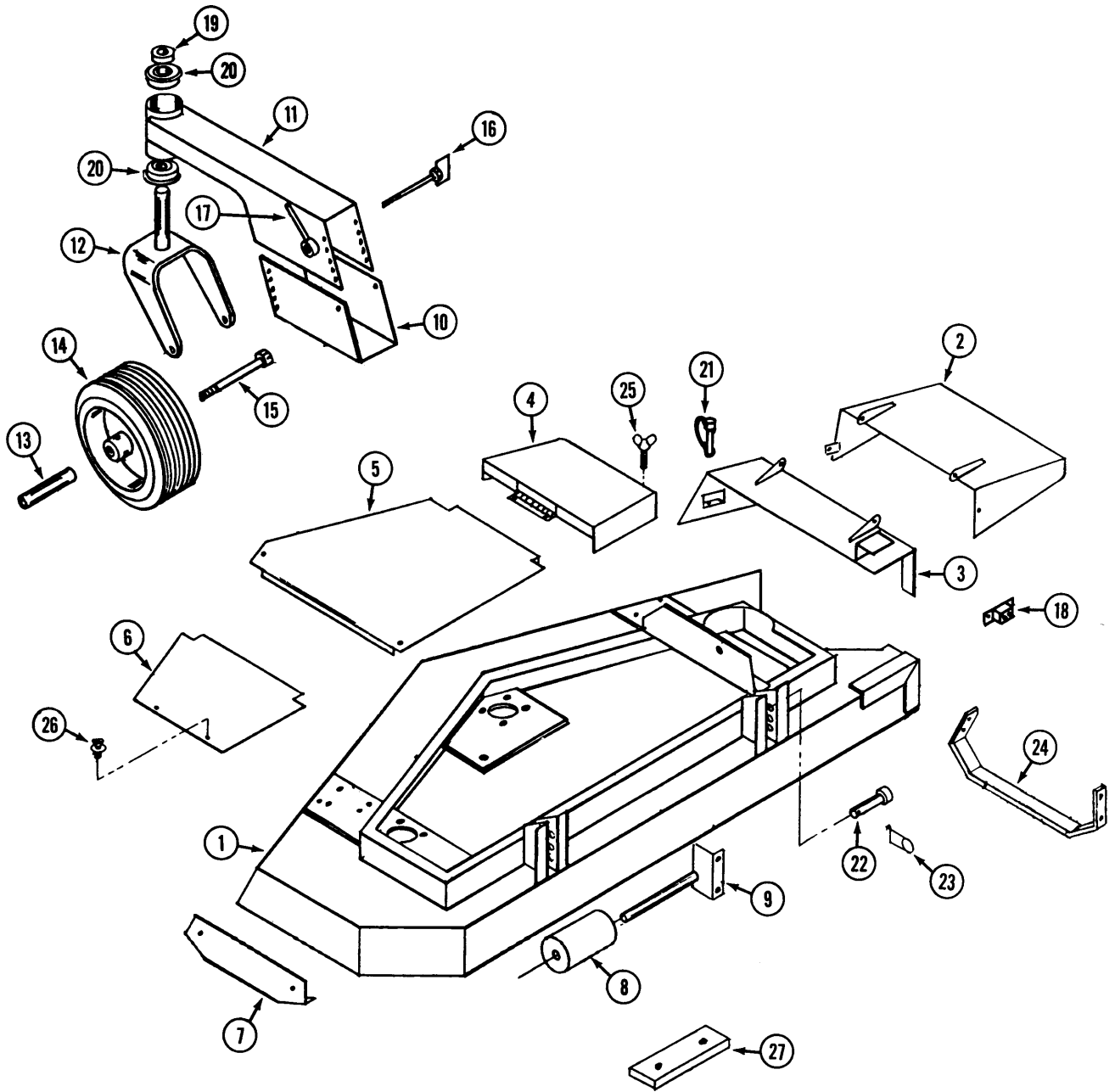
REF.	PART NO.	DESCRIPTION	REQ'D
1	C39205	MOUNT - gear box.....	1
2	C37875	GUARD - belt.....	1
3	C37877	ANGLE - gear box mount.....	1
4	C37929	TIGHTENER - belt.....	1
5	C37880	HOUSING - spindle.....	3
6	C37881	SPACER - spindle.....	3
7	C37883 *	SHAFT - spindle, short.....	2
7	C44128 **	SHAFT - spindle, short.....	1
8	C37884 *	SHAFT - spindle, long.....	1
8	C44130 **	SHAFT - spindle, long.....	1
9	C42786 *	BEARING - spindle.....	3
10	C37930	BLADE - mower.....	3
10	C44136 **	BLADE - mower.....	1
11	C37931	PULLEY - spindle.....	4
12	C37932	PULLEY - gear box output.....	1
13	C37893	PULLEY - gear box input.....	1
14	C37933	PULLEY - idler, large.....	1
15	C37934	PULLEY - idler, small.....	1
16	C37935	BELT - deck.....	1
17	C37895	BELT - drive.....	2
18	C37898	GEAR BOX - angle drive (see page 83 for repairs) (Curtis model).....	1
18	C42775	GEAR BOX - angle drive (see page 83 for repairs) (Superior model).....	1
19	C37888	SPACER - washer.....	12
20	C37901	BOLT - 1/4" - 20 x 4".....	1
21	C39386	BOLT - 5/16" - 24 x 3/4" lock.....	3
22	C37900	WASHER - 5/16" - 10 gage.....	3
23	C37886 *	WASHER - blade.....	3
24	C37557 *	BOLT - 3/8" - 24 x 1-1/4".....	3
24	113-268 **	BOLT - 3/8" - 16 x 1" (also required 131-1216 locknut).....	6
25	C29581	KEY - 3/16" x 1".....	6
26	C37937	SPACER - idler pulley.....	1
27	113-312	BOLT - 7/16" - 14 x 1-1/4".....	12
28	192-22	LOCKWASHER - 7/16".....	12
29	129-104	NUT - 7/16" - 14.....	12
30	113-257	BOLT - 3/8" - 16 x 2-1/2".....	1
31	129-103	NUT - 3/8".....	1
32	192-21	LOCKWASHER - 3/8".....	1
33	113-208	BOLT - 3/8" - 16 x 1-1/4".....	1
34	131-71	NUT - 1/4" - 20 lock.....	1
35	111-371	BOLT - 3/8" - 16 x 1" carriage.....	1
36	113-103	BOLT - 5/16" - 18 x 1".....	4
37	192-20	LOCKWASHER - 5/16".....	5
38	113-102	BOLT - 5/16" - 18 x 3/4".....	1
39	129-102	NUT - 5/16" - 18.....	1
40	113-1	BOLT - 1/4" - 20 x 1/2".....	2
41	192-19	LOCKWASHER - 1/4".....	2
42	C37902	HOUSING ASSEMBLY - spindle (includes ref. 5, 6, 9).....	3
43	219-20	FITTING - grease 1/4" - 28.....	3

* Use before S/N: 013306046

** Use S/N: 013306046 and after

INDEX

62" MOWER DECK AND ATTACHING PARTS

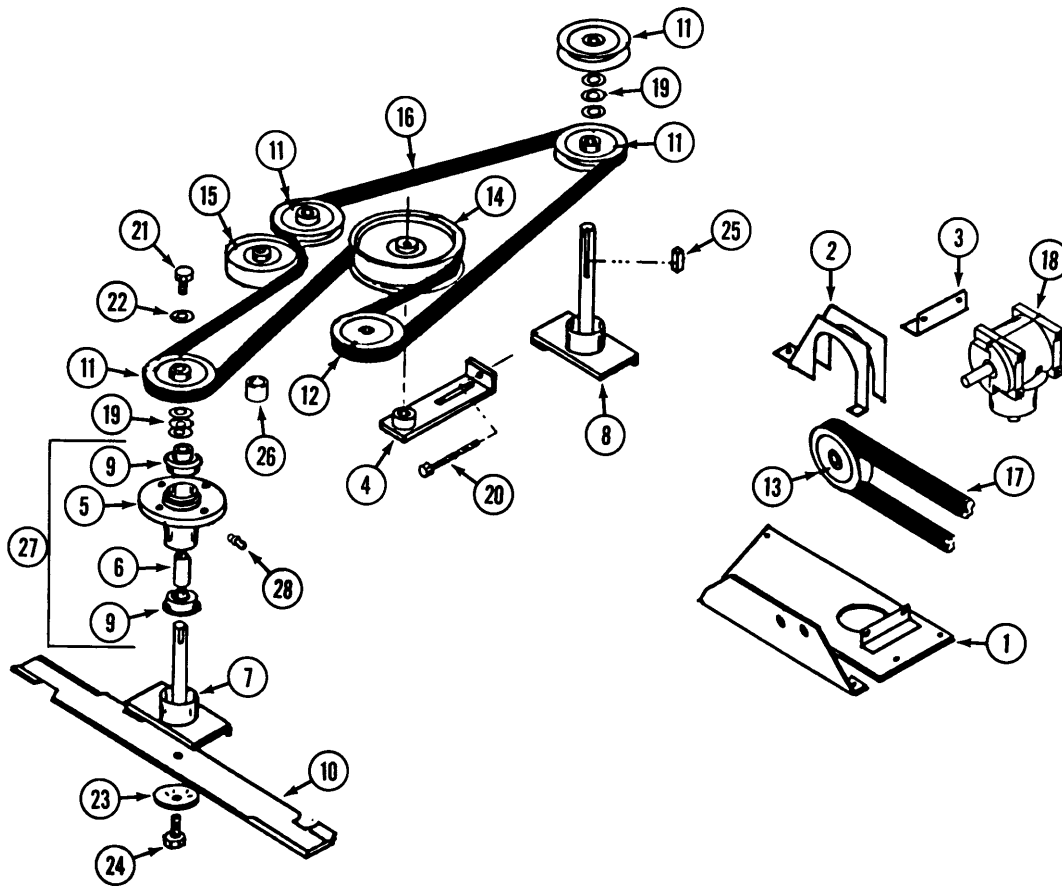


INDEX

62" MOWER DECK AND ATTACHING PARTS

REF.	PART NO.	DESCRIPTION	REQ'D
1	C44088	DECK - 62"	1
2	C41396	CHUTE - foot guard	1
3	C41400	MOUNT - foot guard.....	1
4	C41392	COVER - pulley.....	1
5	C41378	COVER - center	1
6	C41373	COVER - L.H.....	1
7	C37956	SHOE - skid L.H.....	1
8	C37910	ROLLER - anti-skid	1
9	C37911	SHAFT - roller	1
10	C37912	BRACKET - gauge wheel mount	2
11	C37913	MOUNT - gauge wheel	2
12	C37914	FORK - gauge wheel.....	2
13	C37915	AXLE - gauge wheel	2
14	C37916	WHEEL - gauge	2
	C37917	TIRE - 11 x 4.00-5	1
	C37918	RIM - 5	1
	C44499	BEARING - wheel.....	2
15	113-2419	BOLT - 1/2" - 13 x 6-1/2"	2
16	C37920	BOLT-wing	4
17	C37921	NUT - gauge wheel handle	4
18	C37505	BREAKER - circuit - 10 amp	1
19	C37860	COLLAR - set 1".....	2
20	C37824	BEARING - 1".....	4
21	C37922	PIN - "fas-tatch"	1
22	C10821	PIN - deck.....	2
23	C29029	PIN - cotter, hair	2
24	C37957	SHOE - skid R.H	1
25	NSS	SCREW - thumb 1/4" -20 x 1/2" (use 113-3 and 192-19).....	4
26	NSS	SCREW - wing 1/4" - 20 x 1" (use 113-3)	1
27	C37958	WEIGHT - tail, 13 lb	3

62" MOWER DRIVE



INDEX

62" MOWER DRIVE

REF.	PART NO.	DESCRIPTION	REQ'D
1	C41757	MOUNT - gearbox.....	1
2	C37876	GUARD - belt.....	1
3	C37877	ANGLE - gear box mount.....	1
4	C37929	TIGHTENER - belt.....	1
5	C37945	HOUSING - spindle.....	3
6	C37946	SPACER - spindle.....	3
7	C37947 *	SHAFT - spindle, short.....	2
7	C44132 **	SHAFT - spindle, short.....	2
8	C37948 *	SHAFT - spindle, long.....	1
8	C44134 **	SHAFT - spindle, long.....	1
9	C42786	BEARING - spindle.....	6
10	C37949 *	BLADE.....	3
10	C44138 **	BLADE.....	3
11	C37950	PULLEY - spindle.....	4
12	C37932	PULLEY - gear box output.....	1
13	C37893	PULLEY - gear box input.....	1
14	C37933	PULLEY - idler, large.....	1
15	C37934	PULLEY - idler, small.....	1
16	C38929	BELT - deck.....	1
17	C38566	BELT - drive.....	2
18	C37898	GEAR BOX - angle drive (see page 83 for service) (Curtis model).....	1
18	C42775	GEAR BOX - angle drive (see page 83 for service) (Superior model).....	1
19	C37888	WASHER - spacer.....	12
20	C37901	BOLT - 1/4" - 20 x 4".....	1
21	C39386	BOLT - 5/16" - 24 x 3/4".....	3
22	C37900	WASHER - 5/16", 10 gage.....	3
23	C37886 *	WASHER - blade.....	3
24	C37557 *	BOLT - 3/8" - 24 x 1-1/4".....	3
24	113-268 **	BOLT - 3/8" - 16 x 1" (also requires 131-1216 locknut).....	6
25	C29581	KEY - 3/16" x 3/16" x 1".....	6
26	C37937	SPACER - idler pulley.....	1
27	C37951	HOUSING ASSEMBLY - spindle (includes ref. 5, 6, 9).....	3
28	219-20	FITTING - grease 1/4" - 28.....	3

For model 62TCSS
 * Use before S/N 013306063
 ** Use S/N 013306063 and after

For model 62TCII
 * Use before S/N 013307056
 ** Use S/N 013307056 and after

INDEX**GEAR BOX
(Curtis)**

REF.	PART NO.	DESCRIPTION	REQ'D
	C44917	GEARBOX.....	1
1	C37959	HOUSING - half.....	2
2	C29581	KEY - 3/16" x 3/16" x 1".....	2
3	C37960	SHAFT - input.....	1
4	C37961	BEARING - ball.....	1
5	221-84	BUSHING - pipe 1/4" x 1/8".....	1
6	C37963	RING - retaining.....	2
7	C37964	GEAR - output shaft.....	1
8	C37965	SHAFT - output.....	1
9	C37966	BEARING - ball.....	3
10	C37967	LOCKWASHER.....	6
11	C37968	CAP SCREW - allen head.....	6
12	219-23	FITTING - grease 1/4" NPT.....	1
13	C37969	SEAL - shaft.....	2
14	C37970	GEAR - input shaft.....	1
15	C37971	PLUG - expansion.....	1
16	221-441	ELBOW - Street 1/8" x 900.....	1
17	C28241	VALVE - relief.....	1
	C37975	GREASE - synthetic, cartridge.....	1

INDEX**GEAR BOX
(Superior)**

	NSS	GEAR BOX - (use C44917 for service).....	1
1	C42924	SHAFT - pinion, with gear.....	1
2	C42923	SHAFT - cross, with gear.....	1
3	C42917	HOUSING - with tapped holes.....	1
4	C42927	HOUSING with thru holes (not shown).....	1
5	C42918	CUP - bearing.....	4
6	C42921	CONE - bearing.....	4
7	C42919	RING - retaining.....	1
8	C42920	PLUG - pipe 1/4".....	3
9	C42922	SEAL - shaft.....	2
10	C29581	KEY - 3/16" x 1" input shaft.....	1
11	C42928	PIPE - vent.....	1
12	C42926	BOLT - 5/16" x 1" socket head (not shown).....	8
13	C42925	CAP - end.....	1
14	C28215	KEY - 3/16" x 5/8" output shaft.....	1