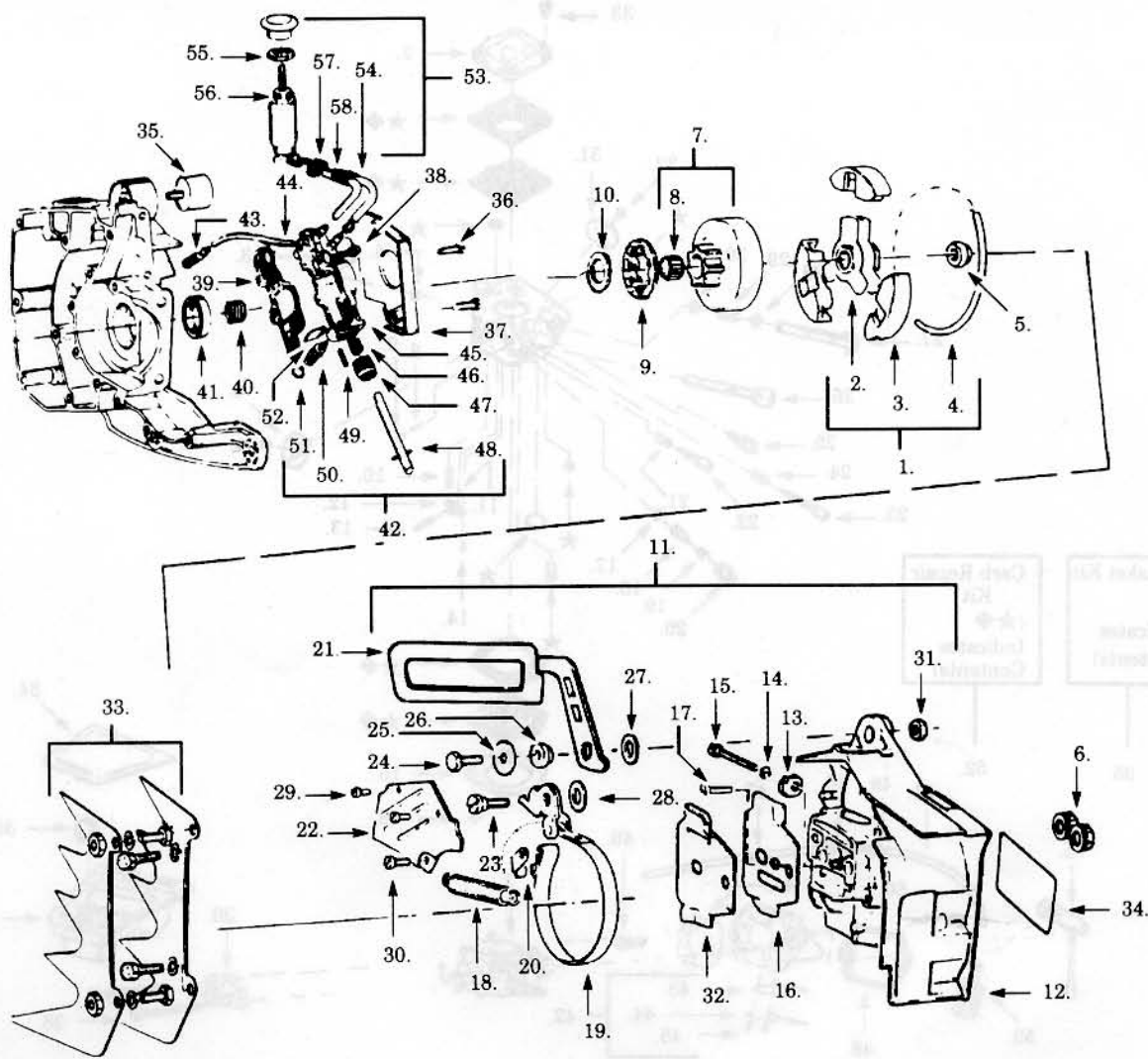


Ref.	Part No.	Description	Ref.	Part No.	Description	Ref.	Part No.	Description
1.	507-4766051	Starter Ass'y.	25.	507-433158	Screw	49.	507-430840	Throttle Lockout Lever
2.	505-305120	Starter Cord	26.	507-429851	Washer	50.	507-4303271	Throttle Trigger
3.	507-4314418	Starter Handle	27.	507-433611	Screw	51.	507-430830	Throttle Link
4.	507-4745391	Fan Housing Assy (Incl. 2-5, 7, 8, 10, & 13-17)	28.	507-433488	Washer	52.	507-430399	Throttle Pin
5.	507-475583	Air Inlet Screen	29.	507-433562	Spark Plug	53.	507-431669	Screw
6.	507-430716	Eyelet	30.	507-431705	Screw	54.	507-431705	Screw
7.	507-430576	Baffle Plate	31.	507-431640	Washer	55.	507-43020219	Choke Knob & Wire Ass'y.
8.	507-430812	Washer	32.	507-476339	Module & Switch Wire Ass'y. (Incl. 35)	56.	507-429650	Grommet
9.	507-476600	Rewind Spring	33.	507-476096	Spark Plug Boot & Clip	57.	507-4757218	Top Cover Ass'y. (Incl. 58 & 59)
10.	507-476606	Pulley & Spring Kit	34.	507-430694	Sleeve	58.	507-432817	Knob Cover
11.	507-476601	Starter Pulley	35.	507-433248	Switch Wire	59.	507-430282	Bumper
12.	507-431649	Screw	36.	507-475623	Grounding Switch	60.	507-432140	Clip
13.	507-431640	Washer	37.	530-024858	Switch Plate	61.	507-432634	Screw
14.	507-431692	Lockwasher	38.	507-431655	Nut	62.	507-431655	Nut
15.	507-431694	Screw	39.	507-430197	Shock Absorber	63.	507-430203	Nut
16.	507-428105	Washer	40.	507-4305758	Bottom Frame	64.	507-4315548	Top Frame
17.	507-431695	Screw	41.	507-432404	Rear Hand Guard	65.	507-433184	Screw
18.	507-430887	Screw	42.	507-431078	Nut	66.	507-431687	Screw
19.	507-430876	Pawl	43.	507-431685	Screw	67.	507-476485	Front Handle-Full
20.	507-431416	Pawl Spring	44.	507-431675	Plate Screw	68.	507-476484	Front Handle-Half
21.	507-430878	Pawl Washer	45.	507-429266	Terminal Screw	69.	507-4323378	Cylinder Shroud
22.	507-430800	Nut	46.	507-430990	Ground Wire			
23.	507-476638	Flywheel	47.	507-473935	Lower Grip Ass'y.			
24.	507-433159	Screw	48.	507-431092	Spring			

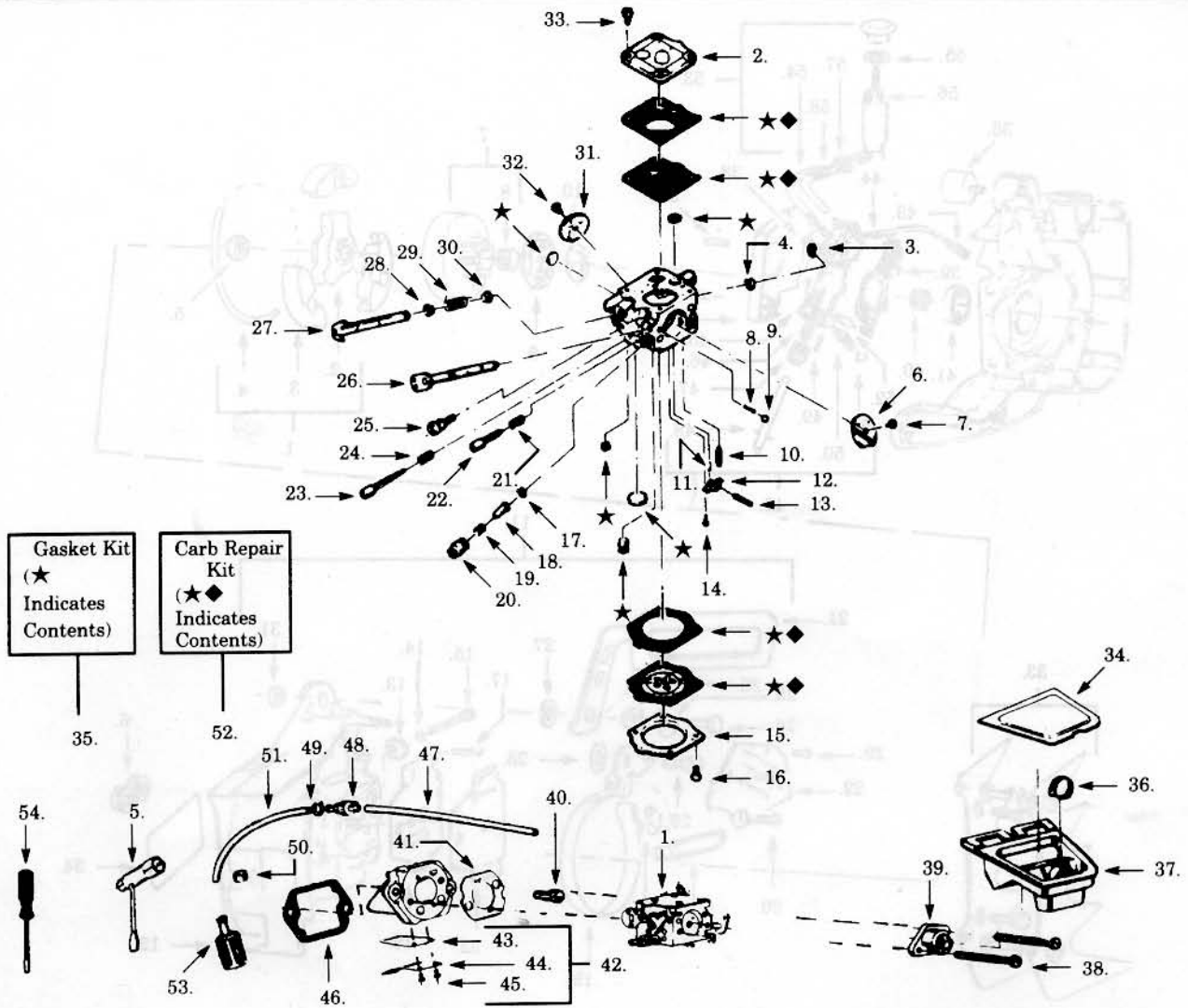
✓ = NEW PART NUMBER FOR THIS IPL * = REFER TO THE SERVICE REFERENCE INDICATED FOR MORE INFORMATION. (LOCATED AT END OF IPL)



Ref.	Part No.	Description	Ref.	Part No.	Description	Ref.	Part No.	Description
1.	507-475976	Clutch Ass'y. (Incl. 2-4)	21.	507-4764868	Kickback Guard Ass'y.	42.	507-476505	Oil Pump Ass'y. w/ Manual Override (Incl. 43, 44, 46, 47, 49-52)
2.	507-433133	Clutch Driver	22.	507-476583	Cover Ass'y.	43.	507-430640	Inlet Tube
3.	507-433102	Clutch Shoe	23.	507-431036	Bolt	44.	507-476504	Oil Pump Body
4.	507-431200	Clutch Spring	24.	507-431716	Screw	45.	507-431221	Plunger Spring
5.	507-430800	Nut	25.	507-430930	Washer	46.	507-430880	Oil Pump Gear
6.	507-433036	Strut Nut	26.	507-433529	Bushing	47.	507-474932	Plunger Ass'y.
7.	507-475081	Clutch Drum & Bearing	27.	507-433532	Washer	48.	507-431699	Roll Pin
8.	530-032049	Bearing	28.	507-430878	Washer	49.	507-433242	Adj. Screw
9.	-	Rim Segment	29.	507-431675	Screw	50.	507-431359	O-Ring
	952-004746	3/8 TT	30.	507-431673	Screw	51.	507-430229	Oil Pump Seal
	507-429957	404 TT	31.	530-015515	Nut	52.	507-475499	Oil Pump Ass'y. (Incl. 54-58)
10.	507-430848	Thrust Washer	32.	507-432686	Inner Guide Plate	53.	507-432317	Sleeve
11.	507-4765721	Brake Ass'y. (Incl. 13-31)	33.	-	Bucking Spur (Incl. screws, washers, 2 spurs)	54.	507-432303	Nut
12.	507-4762761	Clutch Cover & Tensioner		507-476072	Northeast Style	55.	507-476369	Manual Oil Pump
				507-476079	Smaller Style	56.	501-606801	Speed Clip
13.	507-425672	Pin	34.	507-433712	Side Decal	57.	507-432296	Oil Hose
14.	507-431636	Retaining Ring	35.	507-430197	Shock Absorber			
15.	507-432613	Screw	36.	507-431642	Screw			
16.	507-433109	Outer Guide Plate	37.	507-433538	Dirt Shield			
17.	507-429266	Terminal Screw	38.	507-431669	Screw			
18.	507-433185	Spring	39.	507-433539	Gasket			
19.	507-476284	Cam/Band Ass'y.	40.	507-430231	Wire Worm			
20.	507-431038	Locking Plate	41.	507-428746	Seal			

✓ = NEW PART NUMBER FOR THIS IPL * = REFER TO THE SERVICE REFERENCE INDICATED FOR MORE INFORMATION. (LOCATED AT END OF IPL)

PARTS LIST NO. 507-433720		POULAN PRO® PARTS LIST	MODEL(s) 655/655BP
DATE 11/15/94	REPLACES 507-433720-7/15/93		Note: Illustration may differ from actual model due to design changes



Ref.	Part No.	Description	Ref.	Part No.	Description	Ref.	Part No.	Description
1.	530-035358	Carburetor WJ-38	22.	507-433522	Hi Speed Needle	44.	507-430859	Gasket
2.	507-433509	Fuel Pump Cover	23.	507-433521	Idle Needle	45.	507-431536	Fuel Hose
3.	507-433771	Clip	24.	505-210050	Spring	46.	507-431268	Connector
4.	506-028301	Washer	25.	507-433518	Idle Speed Screw	47.	507-431271	Gasket
5.	530-031146	Combination T Wrench	26.	507-433512	Choke Shaft Ass'y.	48.	501-606801	Speed Clip
6.	507-430749	Choke Shutter	27.	507-433510	Shaft Throttle Assy.	49.	507-100126	Fuel Hose
7.	507-433517	Screw	28.	502-103101	Bushing	50.	507-433525	Carb. Repair Kit (★◆ Indicates Contents)
8.	503-117701	Spring	29.	507-433519	Spring	51.	530-091878	Fuel Filter Ass'y.
9.	503-117101	Ball	30.	502-103101	Bushing	52.	507-431247	Screwdriver
10.	503-117001	Valve (★◆)	31.	507-433511	Throttle Valve			
11.	503-117601	Spring (★◆)	32.	507-433517	Screw			
12.	505-316734	Lever (★◆)	33.	507-430751	Screw			
13.	507-430757	Metering Lever Pin (★◆)	34.	507-475289	Air Filter			
14.	507-430764	Meter Lever Screw (★◆)	35.	507-433526	Gasket/Diaphragm Kit (★ Indicates Contents)			
15.	505-316702	Cover	36.	507-432100	Clamp			
16.	503-108701	Screw	37.	507-432734	Air Box Boot			
17.	507-433524	Washer	38.	507-431657	Screw			
18.	507-433516	Diaphragm (★◆ & ★)	39.	507-432911	Blow Back Tube			
19.	507-433520	Compression Spring	40.	507-431653	Screw			
20.	507-433515	Plug Cover	41.	507-432843	Gasket			
21.	504-210050	Spring	42.	507-476213	Reed Valve Ass'y.			
			43.	507-433023	Reed Valve			

✓ = NEW PART NUMBER FOR THIS IPL ★ = REFER TO THE SERVICE REFERENCE INDICATED FOR MORE INFORMATION. (LOCATED AT END OF IPL)

PARTS LIST NO. 507-433720		POULAN PRO [®] PARTS LIST	MODEL(s) 655/655BP
DATE 11/15/94	REPLACES 507-433720-7/15/92		Note: Illustration may differ from actual model due to design changes

SERVICE REFERENCE

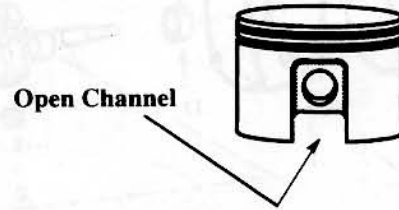
I. Piston Ass'y (Piston, Wrist Pin and Wrist Pin Retainer) – When servicing the piston determine whether the unit is equipped with the new or old style piston. The new style piston is designed with an 'open channel' as shown in the drawing below. A different wrist pin and wrist pin retainer are required for the new style piston. Part numbers of these parts are shown below the respective pistons on which they are used.

Old Style #507-476610



Wrist Pin 507-433475
Wrist Pin Retainer 507-433753

New Style #507-476626



Wrist Pin 507-433476
Wrist Pin Retainer 507-433756

GUIDE BAR AND CHAIN INFORMATION

BARS

Part No.	Length	Pitch
952-044312	16" SNR	3/8 - .050
952-044312	16" SNR	3/8 - .050
952-044349	16" SNR	3/8 - .058
952-044321	16" HT	3/8 - .050
952-044321	16" HT	3/8 - .050
952-044357	16" HT	3/8 - .050
952-044313	18" SNR	3/8 - .050
952-044313	18" SNR	3/8 - .050
952-044350	18" SNR	3/8 - .058
952-044350	18" SNR	3/8 - .058
952-044314	20" SNR	3/8 - .050
952-044314	20" SNR	3/8 - .050
952-044351	20" SNR	3/8 - .058
952-044322	20" HT	3/8 - .050
952-044322	20" HT	3/8 - .050
952-044358	20" HT	3/8 - .058
952-044315	24" SNR	3/8 - .058
952-044352	24" SNR	3/8 - .058
952-044323	24" HT	3/8 - .050
952-044359	24" HT	3/8 - .058
952-044316	28" SNR	3/8 - .050
952-044355	32" SNR	.404 - .063
952-044356	36" SNR	.404 - .063

CHAINS

Part No.	Type
952-051264	16" (P72S-60)
952-051264	16" (P730-60)
952-051265	18" (P72S-66)
952-051265	18" (P72S-66)
952-051266	20" (P72S-70)
952-051266	20" (P72S-70)